



# FACT SHEET

**THE CAROLINA THREAD TRAIL** is a network of greenways and conserved corridors that links 15 counties in North and South Carolina and is a collaborative project of unprecedented scale. The Thread connects our region and places of interest, and conserves our most significant natural areas.

**BACKGROUND** In 2005, Foundation For The Carolinas and more than 40 community and business leaders participated in a discovery process to identify our region's most pressing environmental need. The process produced the vision of the Carolina Thread Trail, which launched in 2007.

**PROJECT PARTNERS** Catawba Lands Conservancy serves as the lead agency and Foundation For The Carolinas is The Thread's philanthropic partner. The Thread is a model for regional collaboration involving local governments, businesses, community groups and the region's land trusts.

**FUNDING MODEL** The Carolina Thread Trail was launched with a private capital campaign that continues to leverage local, state and federal funds. From this funding, implementation grants have been awarded and momentum is being created in communities across our footprint. Currently, there are 87 communities with connected, adopted master plans averaging 100 miles per county.



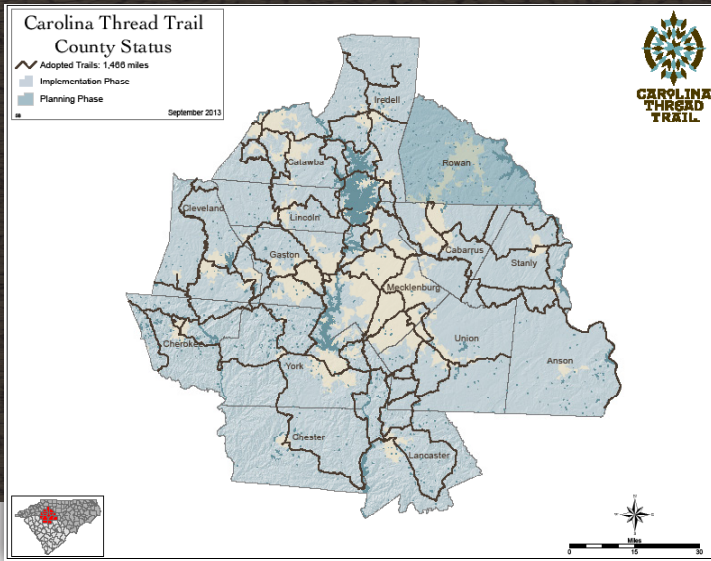
## THE THREAD'S ROLE

The Thread plays three roles to support its community partners:

- 1. COMMUNITY SUPPORT** Our team engages our communities in the planning and implementation of The Thread, starting with countywide master planning. Once plans are adopted, we actively partner with communities on priority corridors to help them realize their vision for The Thread.
- 2. FUNDING** Through our private fundraising efforts, The Thread grants funds to communities for planning, design, land acquisition and construction of trail segments. We also assist communities in attracting public funding and other private grants.
- 3. EXPERTISE** We enhance trail-building capacity across the region through our annual trail forum, a day of learning from experts and sharing best practices. We also provide mapping expertise to support the design and implementation of trails. By training volunteer leaders in sustainable trail building, The Thread coordinates a core of volunteers in building and maintaining natural surface trails.

## QUICK FACTS

\$4.5 million in private grant awards to communities  
15 counties with adopted master plans with Thread routes  
87 local governments collaborating  
220+ miles of Thread trail open



## BENEFITS

The Thread is a unique and comprehensive initiative that will offer our communities and more than two million people the benefits of:

- Alternative Transportation
- Economic Development
- Recreation
- Connectivity
- Health and Wellness
- Water Quality and Quantity
- Conservation Corridors
- Public Access
- Wildlife Habitat

## 15 THREAD COUNTIES

Our 15-county region includes **Anson, Cabarrus, Catawba, Cleveland, Gaston, Iredell, Lincoln, Mecklenburg, Rowan, Stanly and Union** counties within North Carolina and **Cherokee, Chester, Lancaster and York** counties in South Carolina.

## 220 TRAIL MILES (and counting...)

### North Carolina

#### Cabarrus

- 8th Street Greenway
- Bakers Creek Greenway
- Buffalo Creek Preserve Trail
- Hector H. Henry II Greenway
- McEachern Greenway
- Myers Park Greenway
- Pharr Family Preserve
- Riverbend Farm Trail
- Irish Buffalo Creek Greenway

#### Catawba

- Conover Greenway
- Conover Station Trail
- Hickory Greenway
- Murray's Mill/David Stewart Trail
- Newton Heritage Trail

#### Cleveland

- Broad River Greenway
- Broad River Greenway Off-Road Trail
- Kings Mtn. Gateway to Downtown Kings Mtn. Sidewalk Connector
- Kings Mountain Gateway Trail
- Ridgeline Trail at Crowders Mtn. State Park (Cleveland & Gaston)

#### Gaston

- Belmont to Cramerton Sidewalk Connector Trail
- Bessemer City Park Trail
- Bessemer City Sidewalk Connector to City Park Trail
- Catawba Creek Greenway
- Catawba River Greenway
- Downtown Connector Trail
- Goat Island Greenway
- Highland Rail Trail
- Mount Holly Linear Park Trail
- Mountain Island Park Trail
- Riverside Greenway
- South Fork Trail
- Seven Oaks Preserve Trail
- Stuart W. Cramer High School Trail

#### Iredell

- Brawley School Road Trail (Sidewalks and Bike Lanes)
- Downtown Mooresville to Bellingham Park (Sidewalks and Bike Lanes)
- Dye Creek Greenway
- Fourth Creek Greenway
- Girl Scouts, Hornets' Nest Council Trail
- Gregory Creek Greenway
- Love Valley Trail
- Richardson Greenway
- Tomlison-Moore Park Trail

#### Lincoln

- E. Main Street/NC 27 Sidewalk Connection to Rail Trail
- Highland Park Trail
- Marcia Cloninger Rail Trail
- Ramsour's Mill/Park Trail
- Sally's YMCA Trail
- South Fork Rail Trail

#### Mecklenburg

- Hill Trail (Latta Plantation)
- Irwins Creek Greenway
- Irwin Creek/Stuart Creek Greenway
- Little Sugar Creek Greenway
- Long Creek Trail
- Lower McAlpine/McMullen/4 mile Creek Greenway
- Mallard Creek Greenway
- McAlpine Creek/Campbell Creek Greenway
- McDowell Creek Greenway
- Memorial/Independence Park Trail and Sidewalk Connection
- Prairie Trail (Latta Plantation)
- Ruth G. Shaw Trail
- Split Rock Trail (Latta Plantation)
- Southeast Greenway
- South Prong Rocky River Greenway
- Torrence Creek Greenway
- Uptown Charlotte Sidewalk Connector (Stonewall St.)
- West Branch Nature Preserve Trail
- West Branch Rocky River Greenway

#### Stanly

- City of Albemarle/Roger F. Snyder Greenway
- Darrel Almond Park Trail
- Morrow Mountain State Park Trail
- Rock Hole Trail and Sidewalk Connection
- Town of Oakboro Rail with Trail

#### Union

- Mineral Springs Greenway
- Prescot Subdivision Trail
- Twelve Mile Creek Greenway

### South Carolina

#### Cherokee

- Limestone College Quarry Trail
- Overmountain Victory Trail at Lake Whelchel
- Overmountain Victory Trail at Cowpens National Battlefield
- National Recreational Trail at Kings Mtn. State Park & Kings Mtn. National Battlefield (Cherokee & York)

#### Chester

- Landsford Canal Trail
- Rocky Creek Trail
- Wylie Park Trail

#### York

- Baxter Village Trail
- Blue Star Trail
- Catawba Indian Nation Trail
- Hood Center Trail
- Kings Mtn. State Park Trail
- Lancaster Twelve Mile Creek
- Manchester Meadows Trail
- Nation Ford Greenway
- Northside Trail
- Piedmont Medical Center Trail (formally Riverwalk)
- River Park Trail
- Rock Hill Sidewalk Connector Trail
- Springfield Nation Ford Greenway

## FUNDING SECURED

- \$16.8 million in private capital
- \$8.5 million in land donations
- \$30.5 million in public funding committed through federal, state and local sources

## LEARN MORE

[carolinathreadtrail.org](http://carolinathreadtrail.org)

To learn more about the Carolina Thread Trail go to our website, call 704.376.2556 or connect with us via social media.



[Facebook.com/carolinathreadtrail](https://www.facebook.com/carolinathreadtrail)



[Twitter.com@threadtrail](https://twitter.com/threadtrail)



Become a Trailhead.

Donate \$25, \$50 or \$100 today for exclusive benefits

## FIND TRAILS

[carolinathreadtrailmap.org](http://carolinathreadtrailmap.org)

## LAND TRUST PARTNERS

Catawba Lands Conservancy is the lead agency for the Carolina Thread Trail



- Other land trust partners:
- Davidson Lands Conservancy
  - Foothills Conservancy
  - Catawba Valley Land Trust
  - Land Trust for Central NC
  - Nation Ford Land Trust