

CATAWBA LANDS CONSERVANCY TO PROTECT MORE OF REGION'S RARE HABITAT

Photo by Crystal Cockman

By Sean Bloom, CLC GIS Director and Biologist

This spring, in a small pocket of Gaston County, slime-covered creatures will emerge from the muck and mire. It may sound like a B-movie horror flick, but it's really nothing more than the adorable bog turtles (*Glyptemys muhlenbergii*), the smallest turtles

in North America. These turtles are listed as Threatened by the US Fish and Wildlife Service (USFWS), and since 2006, Catawba Lands Conservancy has worked with the NC Wildlife Resources Commission (NCWRC), the USFWS and a private landowner to protect the stream and bog these turtles call home.

The clean and cool water entering the bog is one of the many things that makes this area so inviting for the bog turtles. Normally, bog turtles are found high up in the Appalachian Mountains, but Gaston County is home to one of the rare Piedmont populations. During the last ice age, many plants and animals were forced south and out of the mountains to avoid the ice sheet. As the ice sheet and glaciers retreated, plants and animals began moving north and up into higher elevations. Although, in certain instances, when conditions were just right, plants and animals stayed in areas isolated from the rest of the population.

Such is the case with Gaston County's bog turtles. Here, cool groundwater flows from a spring through a forested canopy and into a wide and flat valley that is flanked by wooded slopes. As the small stream enters the valley it

slows and widens out across the valley floor, creating a sunny bog.

While the bog itself is open and not shaded, the forested slopes help shield the bog below from getting too warm in the long, hot Piedmont summers. "It is the cold groundwater flowing into the bog, keeping it cool, which is key for these bog turtles," says Jeff Hall, a Wildlife Diversity Biologist with the NCWRC. The shaded, wooded slopes and sunny, open bog create a Goldilocks environment; not too cold and not too hot. Just right for the little bog turtles!

This population is significant for the species' survival. According to Professor Shannon Pittman of Davidson College, "isolated populations, like this bog, can be important reservoirs of genetic diversity which can benefit the species at large."

Not only has the Conservancy protected the bog and surrounding land, but the stewardship team has also recently supervised a bog restoration with the USFWS to ensure the bog stays wet and mucky.



PART OF THE BOG CURRENTLY PROTECTED BY CLC

THE BOG IS IN TROUBLE

The bog that the Conservancy has worked so hard to protect over the last 10 years is now at risk. An adjoining property, which surrounds the headwaters for the bog, is for sale and slated to be cleared for development. By conserving the adjoining property, the Conservancy will protect the stream and bog as well as the trees which provide the shade that makes the clear, cool water an ideal habitat for the bog turtles.



HELP US SAVE THE BOG TURTLE'S HOME!

With your help, we can save the bog and protect the habitat of the smallest turtle in North America. Catawba Lands Conservancy must raise the remaining \$50,000 needed to purchase the adjoining property by May 1.

Every dollar donated helps us reach this goal and puts us one step closer to saving this fragile ecosystem. Please visit catawbalands.org/bog to make a donation towards the bog!



LETTER FROM THE BOARD CHAIR

2017 was another year of unprecedented growth in our region. In the midst of continued significant development, Catawba Lands Conservancy conserved seven properties totaling almost 447 acres of permanently protected land. These projects reflect all aspects of our strategic vision to protect land that impacts water quality, quality of life, wildlife habitat and local farms, and to advance the Carolina Thread Trail.

It is more clear than ever that we are a pivotal part of our region's growth story. There is still a tremendous opportunity to protect and conserve in our region. We are positioned to take advantage of that opportunity in the way that will impact the quality of life for everyone in this region, today and in the future. Completing new projects is a small part of our work; the real impact as an organization is how we manage our properties for public benefit.

In this issue, read about research that is being conducted at Redlair, one of our largest



conservation areas, where the effects of our region's explosive growth and development on our river basin and our water quality are being studied.

You will also

learn about a rare species of turtle and the work we are doing to ensure the survival of a bog they call home. Work like this would not be possible without donors like you who make it possible for us to protect these properties, so as always, I am grateful for all that you have done and continue to do to make it possible to carry out our mission to save land and connect lives to nature.

JONATHAN MANGELS
PARTNER, GREER WALKER

FIELD NOTES

#GIVINGTUESDAYCLT RAISES \$73,370 FOR CONSERVATION

Thank you to everyone who donated during #GivingTuesdayCLT! More than 230 local nonprofits raised \$7 million during SHARE Charlotte's local Giving Tuesday campaign from Nov. 14-28.

CLC's #GivingTuesdayCLT campaign focused on protecting and sustaining our drinking water, and raised more than \$73,000. A 2006 water supply study projected that with our region's continuing growth, the Catawba-Wateree River Basin, which sustains

nearly 2 million people with water, will no longer be able to meet our water needs by 2065. Thank you for helping us protect our region's water supply!

SHARE Charlotte created #GivingTuesdayCLT in 2014 as a local, annual campaign that leverages the global Giving Tuesday movement. It's an unprecedented collaboration of 230 nonprofits and 117 businesses working together for the greater good. SHARE's mission is to create a more engaged community by connecting individuals with local nonprofit organizations. This is CLC's third year participating in SHARE Charlotte's #GivingTuesday-CLT campaign.

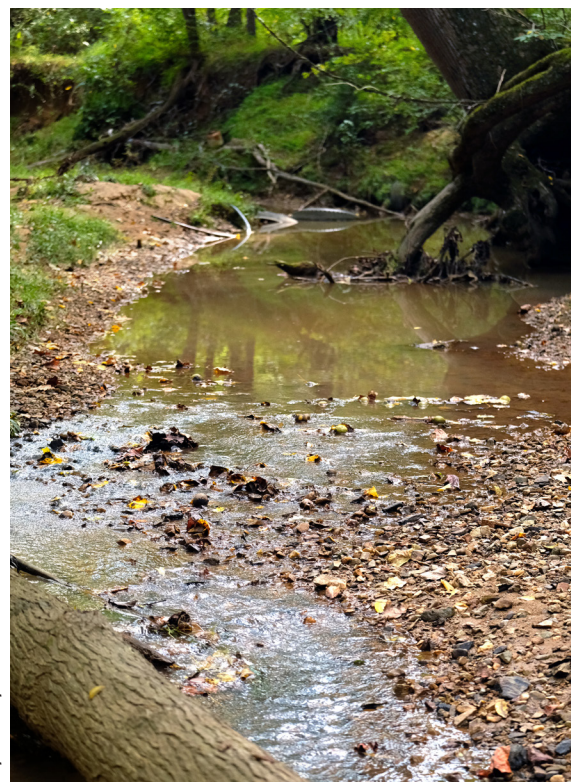
CLC WELCOMES NEW PROGRAM COORDINATOR SENA MCCRORY



Sena McCrory joined the Catawba Lands Conservancy team in January 2018. As program coordinator, she plans and leads recreational

and educational events along our growing network of greenways and blueways, exposing the public to the wonders and the importance of connecting with nature. Sena is a Charlotte native who spent several years exploring other parts of the country and world before returning to her hometown.

Her college studies took her to Houston's Rice University where she majored in ecology and she served as a sustainable farm intern in Virginia, Maine, Pennsylvania and southern France. Before joining CLC, Sena worked as an afterschool teacher at Anne Springs Close Greenway in Fort Mill, S.C. In her free time, she enjoys cooking, gardening, hiking and daydreaming about her future farm. This position is supported by a grant from the Women's Impact Fund.



Gum Branch Preserve

CLC & CTT STAFF

Tom Okel – *Executive Director*
Bret Baronak – *Carolina Thread Trail Community Coordinator*
Sean Bloom – *GIS Director and Biologist*
Robin Buckler – *Finance Director*
Saxby Chaplin – *Legal Counsel*
Matt Covington – *Land Acquisition Director*
Vanessa Covington – *Engagement and Volunteer Manager*
Alesia DiCosola – *Development Director*
Lynda Hunley – *Land Protection Legal Assistant*
Andy Kane – *Carolina Thread Trail Senior Director*
Sam Kirk – *Stewardship Associate*
Sena McCrory – *Program Coordinator*
Elizabeth Miller – *Executive Team Assistant*
Tammy Pfaff – *Land Protection Paralegal*
Caitlin Reilly – *Carolina Thread Trail Davidson Impact Fellow*
Allison Schwartz – *Marketing and Communications Director*
Sharon Wilson – *Land Stewardship Director*

CLC BOARD OF DIRECTORS

Jonathan Mangels – *Chair and Chair, Audit & Finance Committee*
Partner, Greer Walker

CT Anderson
Former Director of Sustainability, Belk

Phillips Bragg
Vice President of Planning, Bragg Financial Advisors

Jessica Braswell
Associate Professor of Environmental Science, Queens University of Charlotte

Nathan Clark
Partner, Dixon Hughes Goodman, LLC

Dan Clodfelter
Community Leader, Former Mayor of Charlotte

Jarred Cochran
Vice President, Wells Fargo Securities

John Culbertson
Owner, Cardinal Real Estate Partners, LLC

Ralph Falls
President, Pace Commercial LLC

Tom Gates
Attorney, Tilman Thomas Gates, PLC

Claudia Heath
Owner, Claudia Heath Fine Art

Lud Hodges
Senior Vice President, Crescent Communities

Jim Hovis – *Chair, Land Acquisition Committee*
Attorney at Law, Moore & Van Allen, PLLC

Dean Jones
Senior Vice President of Financial Development, YMCA

Kelly Katterhagen
Founder and Managing Director, BlackArch Partners

Tommy Lee – *Chair, Land Stewardship Committee*
President, Appian Textiles

John Mader – *Chair, Marketing/Outreach Committee*
Vice President, Director of Connections, Wray Ward

Julianne McCollum
Principal, Yellow Duck Marketing

Robert McLean
Vice President & General Counsel, EnPro Industries

Bill Mumford
Vice President, Development, Newland Communities

Nancy Paschall
Attorney, Mullen Holland & Cooper P.A.

Scott Phillips
Community Leader

Laurie Smith – *Chair, Nominating & Governance Committee*
Counsel, Robinson, Bradshaw & Hinson, P.A.

Jenny Ward – *Vice Chair, Executive Committee*
Senior Vice President, HR-Organizational Health, Bank of America

CONTACT

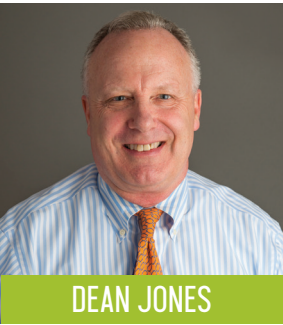
Office:
4530 Park Road
Suite 420
Charlotte, N.C. 28209
Info@catawbalands.org
704-342-3330
catawbalands.org





CLC WELCOMES NEW BOARD MEMBERS

Catawba Lands Conservancy is pleased to welcome **Dean Jones, Tom Gates** and **Nathan Clarke** to its Board of Directors.



DEAN JONES

DEAN JONES

Dean is a 1982 graduate of Davidson College and has experience working in the commercial lending division of Wachovia in Winston-Salem. In 1986, he joined the Development Office at Davidson College, serving

as the Director of Development in conjunction with the College's \$150 million comprehensive campaign and the leadership gift phase of a subsequent \$250 million effort. Dean currently serves as the senior vice president of financial development and chief development officer at YMCA of Greater Charlotte. Dean and his wife, Jane, have three children: Tanner, Nate and Sarah Grace.



TOM GATES

TOM GATES

Tom is a founder and managing partner of Mirador Real Estate Advisors, a real estate advisory firm offering research-based real estate solutions to regional, national and international clients.

He is also the founder and principal attorney of the Law Offices of Tilman Thomas Gates PLLC, where he represents a select group of real estate development and corporate clients both in the United States and abroad. He earned his undergraduate and law degrees from Duke University and received a graduate degree in real estate at The Johns Hopkins University. Tom's community involvement includes two prior terms on the CLC board and work with Queens University, the Charlotte Bilingual Preschool and the Charlotte Preschool Partnership.

NATHAN CLARKE

Nathan is a partner with Dixon Hughes Goodman, leading its tax reform efforts. He has 19 years of public accounting experience, including 15 years with Big Four and national firms, with a deep focus on accounting method changes. Additionally, he is a national resource for tax issues and has spoken at AICPA conferences, state CPA societies and other continuing education events. His community involvement includes serving as commissioner for the Charlotte Mecklenburg Historic Landmarks Commission. A Mountaineer, Nathan graduated from Appalachian State University with a bachelor's degree in accounting.



NATHAN CLARKE

THANK YOU!

CLC would like to congratulate Jonathan Mangels on his new position as Board Chair, and thank Jenny Ward for her service as previous board chair. Additional thanks to Walter Fisher, Jr., 2016 board chair, and Lat Purser III, who rolled off the board at the end of 2017.

STUDYING URBANIZATION'S EFFECT ON WATER

CLC participates in long-term study of Gaston County's Redlair Preserve

By Mary Newsom, UNCC Urban Institute



Charlotte's increasing urbanization is bound to cause changes in the region's water supply. With a grant from the Duke Energy Foundation, two

researchers from UNC Charlotte are about to explore exactly what sort of changes to expect. Their \$76,521 grant from the Duke Energy Water Resources Fund allows Professor Martha Cary Eppes and Assistant Professor David Vinson of UNC Charlotte's Geology and Earth Sciences Department to develop a series of monitoring sites at Redlair Preserve, particularly near its small creeks and watersheds.

The preserve encompasses 1,200 contiguous acres of permanently preserved land in Gaston County along the South Fork River, a prominent tributary of the Catawba River. Martha describes Redlair as a beautiful place with rolling hills, farmland and a typical deciduous forest full of maples, sweet gums, oaks, pines and bigleaf magnolias.

CLC is partnering with the North Carolina Plant Conservation Program, which owns the land, as well as the professors to establish the Catawba Basin Watershed Observatory through the project. Its larger aim is

to collect a large swath of baseline data from the small watersheds of the Catawba Basin and study the influence of invasive species' removal on water. David said Redlair contains highly intact watersheds, especially for the Charlotte region, which is so highly developed.

The goal of the watershed observatory will be to focus on the small tributaries to the South Fork. First, the researchers will study the big watershed and then focus on a few of the smaller tributaries. They'll install wells to measure the levels of groundwater and take samples from it to gauge chemical levels, as well as place surface water monitoring stations along the river to measure surface water flow. The team will also install six weather stations to detect the micro-climatology of Redlair from its valley bottom to its hilltops, tracking weather changes across the area. Martha said the team plans to measure soil moisture and soil temperature, too. Part of their grant money will pay for baseline data analysis, like one-time analyses of soil composition and sediment size.

Furthermore, the scientists propose to measure the accumulation of beryllium 10, a cosmogenic radionuclide, to discover how long the



Photo by Graham Smith

granite rocks at the site have been exposed to the surface of the earth and how quickly they are eroding into the water. Martha said people who are interested in sediment that runs off construction sites into water sources should be able to read their data to understand what the effects of such runoff might be.

In order to conduct hydrologic sampling, David said they will look at stream water levels and groundwater levels, while also catching precipitation. Additionally, they will collect samples at the watershed outlets where the smaller streams join the larger ones. Over the long term, they will monitor water temperature, pH levels to track acidity, nutrient pollution and baseline chemistry.

Martha said they want to give people a broader look at how urban development is affecting streams in Charlotte, and this project will provide researchers with a database to compare an urban-impacted stream to a more "natural" one in Gaston County. Although the team cannot control all variables simultaneously in a natural system to know with complete certainty what is affecting the water supply, the goal is to unravel as much of the complexity as possible

and identify what is truly important. The study will track how water systems change with time, factoring in variations in land use, and, when they are able to combine in several land sites at different stages of urbanization, how a city's sprawl affects water sources, too.

The researchers will also study invasive plants in Redlair, ones that are completely common in the Piedmont now but were not native to the Carolinas. Examples include privet, autumn olive or Japanese stiltgrass. Like kudzu, these plants were brought in for decoration or erosion control but tend to take over and outcompete native plants. Redlair is full of these types of plants, and Martha wants to know how removing them will influence the quality of water in the preserve.

The project will last for a year, with the sites opening up for study in mid-2018. They plan to open up their data to others as it becomes available through a public website. City managers and policymakers will be able to use the research for future urban planning.

reference: <http://plancharlotte.org/story/uncc-hydrogeological-research-gaston-county-redlair>



SAVING LAND

Land protection successes in 2017



With your support, CLC permanently protected seven new properties in 2017. Totaling 447 acres of land, these conserved areas are vital to our region's wildlife habitat and water quality. Three will be open to the public for outdoor recreation via future segments of the Carolina Thread Trail and the Mecklenburg County Greenway System. In 2017, CLC monitored 176 properties and now protects 15,761 acres of natural land across the Southern Piedmont of North Carolina.

PROTECTING FORESTED LANDS AND THE URBAN CANOPY

DOE CREEK CONSERVATION EASEMENT
93 ACRES / MECKLENBURG COUNTY
CONSERVATION VALUES: WILDLIFE HABITAT, CONNECTION TO NATURE

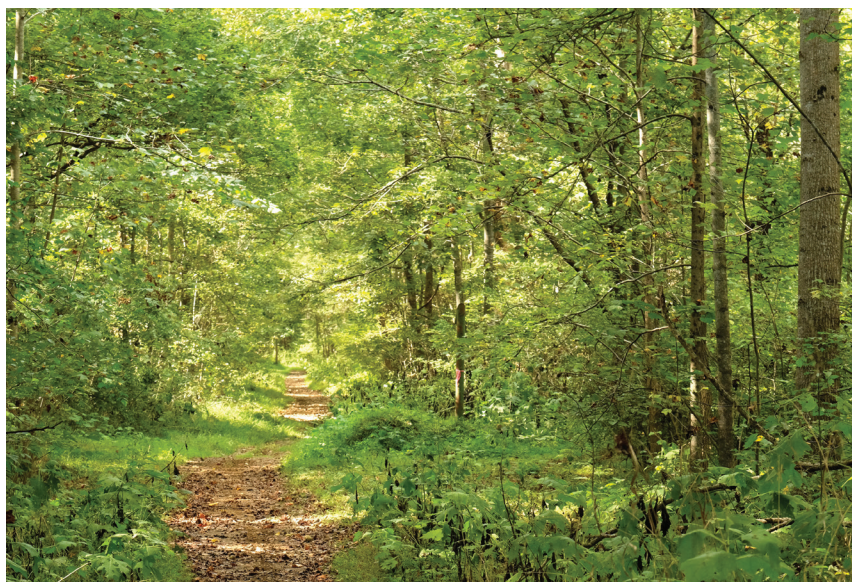
CLC and the City of Charlotte's Tree Canopy Preservation Program (TCPP) worked together to protect 93 acres of timbered and forested lands along Doe Creek, a tributary of Reedy Creek, in east Mecklenburg County near Reedy Creek Park and Nature Preserve.

The TCPP is part of the city's tree ordinance, which allows developers and property owners to make a payment into the fund when they are not able to save the required percentage of tree canopy on a specific property. The program is structured to help the City obtain its goal of achieving 50 percent tree canopy cover by 2050. Doe Creek complements the 48 acres along Reedy Creek that Mecklenburg County previously acquired to develop a greenway through the 880-acre park and nature preserve.

CONSERVING FLOODPLAINS AND WETLANDS

GUM BRANCH CONSERVATION EASEMENT ADDITION
13 ACRES / MECKLENBURG COUNTY
CONSERVATION VALUES: WILDLIFE HABITAT, CLEAN WATER, CONNECTION TO NATURE

The City of Charlotte donated a conservation easement on this forestland along Gum Branch Creek in northwest Mecklenburg County to CLC. The property is adjacent to a 45-acre property CLC conserved in 2016.



Gum Branch Preserve

Photo by Nancy Pierce

The two properties create an almost 58-acre conservation corridor along the creek, which will safeguard water quality and eventually host the Gum Branch Greenway. This latest addition protects approximately 2,020 feet of the creek along with floodplains and wetlands that are critical to filter runoff and flood waters.

ENSURING THE FUTURE OF PLANT SPECIES

SMAWLEY II CONSERVATION EASEMENT
24 ACRES / MECKLENBURG COUNTY
CONSERVATION VALUES: WILDLIFE HABITAT, CLEAN WATER, CONNECTION TO NATURE

CLC partnered with the City of Charlotte and landowners Tracy and Chris Smailey to permanently protect 24 acres of forest on the western side of Mountain Island Lake, the source of Charlotte's drinking water supply. This project expands CLC's first protected property, the Catawba Wildflower Glen, a significant natural area and home to many rare plant species, including Georgia aster and Georgia holly.

SUSTAINING WATER QUALITY FOR AQUATIC SPECIES

GEORGE CLARK CONSERVATION EASEMENT
125 ACRES / LINCOLN COUNTY
CONSERVATION VALUES: WILDLIFE HABITAT, CLEAN WATER, CONNECTION TO NATURE

George and Barbara Clark agreed to work with CLC to conserve their 125-acre property in eastern Lincoln County. Located along Anderson Creek and Killian Creek, the property provides watershed protection to maintain the water quality of both creeks. It also provides a natural habitat for wildlife which includes the Seagreen Darter, a species of fish listed as significantly rare by the NC Natural Heritage Program.

SAFEGUARDING AGRICULTURAL LAND

EAKER FARM CONSERVATION EASEMENT
93 ACRES / GASTON COUNTY
CONSERVATION VALUES: WILDLIFE HABITAT, CONNECTION TO NATURE

CLC preserved 93 acres of farmland in northwestern Gaston County known as Eaker Farm. The donated conservation easement protects agricultural land and 3,400 linear feet along the southern bank of Indian Creek.



Coley Preserve

Photo by Nancy Pierce

FROM FARMLAND TO NATURAL SANCTUARY

COLEY PRESERVE
75 ACRES / LINCOLN COUNTY
CONSERVATION VALUES: CLEAN WATER, WILDLIFE HABITAT, CONNECTION TO NATURE

CLC purchased this parcel of farm and forestland in a bargain sale from Bondi Coley using a grant from the North Carolina Clean Water Management Trust Fund. The property is located in the River Bend Conservation Area, which protects 890 acres along 6.5 miles of the South Fork Catawba River. The preserve protects a high-quality, mesic mixed hardwood forest bluff, as well as a segment of wetlands.

The property is also located on a planned corridor of the Carolina Thread Trail. The preservation of the property protects important natural habitat for fish, wildlife and plants. The land will also provide watershed protection to shield and maintain the water quality of Pott Creek and the South Fork Catawba River.

CONNECTING HIKERS TO NATURE TRAILS

JACKSON BLACKJACK PRESERVE
23.5 ACRES / UNION COUNTY
CONSERVATION VALUES: WILDLIFE HABITAT, CONNECTION TO NATURE

David Simonini donated a 23.5-acre property to CLC which was permanently protected in partnership with the Nation Ford Land Trust in Fort Mill, SC. Located on South Potter Road in Union County, the property was identified as a significant natural area by the North Carolina Natural Heritage Program in 2012.

This preserve is home to a population of Carolina Prairie-trefoil, a species of concern according to the North Carolina Plant Conservation Program, as well as Heller's rabbit tobacco, which the NCNHP identifies as significantly rare. A future segment of the Carolina Thread Trail is planned for South Potter Road, and Jackson Blackjack Preserve will host a connector to the trail.



Volunteers helping plant the pollinator garden at Seven Oaks Preserve

STEWARDSHIP FOR THE FUTURE

Highlights of how we cared for the land
and waterways in 2017



RARE LOGGERHEAD SHRIKES FLYING NEAR GRACE FARM

Although Loggerhead shrikes have not been officially spotted at Grace Farm in Lincoln County, CLC staff suspects that they are around the farm.

Loggerhead shrikes have been on the decline since the 1960s due to habitat loss. Their most common habitat is open countryside with scattered shrubs and trees. The rare gray bird has a black mask and white flashes on its back wings, which stand out against its black tail and mostly black wings. The term “loggerhead” refers to the relatively large size of its head in relation to the rest of its body.

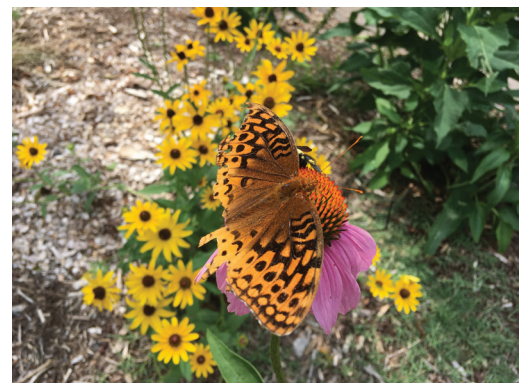
Nicknamed “the butcher bird” after its carnivorous tendencies, Loggerhead shrikes consume prey such as amphibians, insects, lizards, small mammals and other small birds. Because of its small size and weak talons, the bird often impales its prey on thorns or barbed-wire fences. CLC’s Biologist and GIS Director Sean Bloom was the first to become aware of the birds’ presence when he noticed small rodents and bugs that had been impaled on a fence.

Grace Farm sits on approximately 107 acres along the Upper South Fork River. The permanently protected, working cattle farm provides natural habitats for fish, wildlife and plants. The property also protects water quality through riparian buffers, wetlands and floodplains. The fields on the farm are managed with native warm season grasses.



POLLINATOR GARDEN WILL SOON BLOOM

During the summer of 2017, CLC’s stewardship team devised a plan to convert the grass along Seven Oaks Preserve’s trailhead in Belmont into a pollinator garden. After securing a grant from the Community Foundation of Gaston County, CLC and volunteers planted 340 plugs of native wildflowers and grasses. The garden now includes Purple Cone Flower, Black-eyed Susan, Blazing Star, Cardinal Flower, Joe-Pye Weed, Sweet Grass, Butterfly Weed and Broom-sedge. Visit the unique garden at the trailhead entrance at 6900 South New Hope Road in late spring and early summer and admire our handiwork!



CLAYS FOR CONSERVATION A SMASHING SUCCESS

Our second annual Clays for Conservation event in September 2017 was a major success! Held at the idyllic Fork Farm and Stables, CLC’s largest conserved property located at the confluence of the Rocky and Pee Dee rivers, the event raised more than \$38,000 for land conservation efforts. We were thrilled to welcome more than 120 participants for a day of sporting clays, wonderful food and conversation. During lunch, Tim Gestwicki, executive director of the NC Wildlife Federation, gave an inspirational talk on the importance of conservation for our state’s wildlife habitats. We hope you enjoyed the event as much as we did and look forward to this year’s event on Thursday, September 20.

PRESENTING SPONSOR:



LUNCH: Appian Textiles

GIFT SPONSORS: McKim and Creed
Sides Erosion Control Services





2017 BY THE NUMBERS



27

PROGRAM, OUTREACH AND
WORKDAY NONPROFIT PARTNERS



176 PROPERTIES MONITORED



48

OUTDOOR ADVENTURES



7,727

PEOPLE CONNECTED

THROUGH SPECIAL EVENTS INCLUDING THE
SOUTHERN SPRING HOME + GARDEN SHOW, POP-
UP PICNIC, NATIONAL TRAILS DAY, CLAYS FOR
CONSERVATION, TASTE FOR THE LAND, FALL INTO
THE THREAD AND TRAIL FORUM



7 NEW PERMANENTLY
PRESERVED PROPERTIES



447

TOTAL ACRES PROTECTED



407 VOLUNTEERS



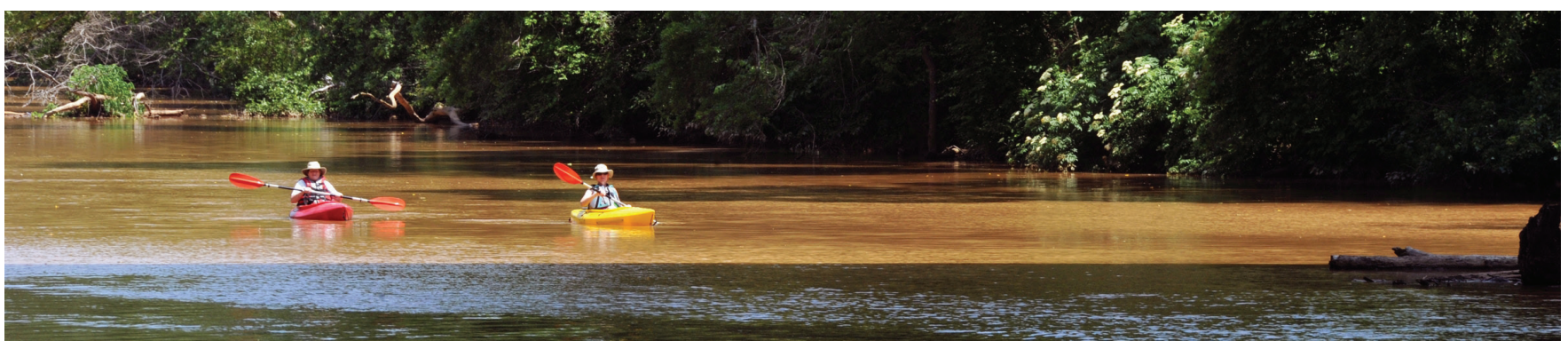
1,425

VOLUNTEER HOURS



920 PEOPLE ATTENDED PROGRAMS

1,251 MEMBERS





CAROLINA THREAD TRAIL 2017 ANNUAL REPORT

LINKING TOWNS TO ONE ANOTHER AND PEOPLE TO NATURE

Photo by Nancy Pierce

Stanly County's Falcon Trail is a connector in more ways than one

By Page Leggett

Don't be confused by the name "Falcon Trail." You're not likely to see a falcon on the 2.7-mile trail – part of the Carolina Thread Trail – that connects the Stanly County communities of Misenheimer and Richfield, and will eventually connect to New London.

When I asked Chris Lambert, executive director of the Stanly County Convention & Visitors Bureau if he'd ever seen a falcon on the trail, he said, "Boy, I wish I could tell you I had."

A few seconds later, he recalled he had seen one: Freddie the Falcon, a human dressed in Pfeiffer University's mascot costume. The trail, it seems, is named to honor Pfeiffer University and not the bird of prey.

And Pfeiffer students have benefitted tremendously from having easy access to an idyllic place to walk, run and mountain bike. There wasn't a connector between Pfeiffer's Merner Gymnasium and Richfield Park until this trail opened in September 2016. "Students can now walk to the park," said Lambert. "It's a great asset for them. And Pfeiffer faculty and administration can get out on the trail during their lunch break."

It's an easy-to-moderate hike – relaxed enough for kids and seniors to enjoy it. And they do. Lambert's kids, ages 5 and 7, especially love the bridges – a swinging one and a covered one. The swinging bridge leads to an island with a picnic table.

Dr. Mike Riemann, a retired Pfeiffer chemistry professor, may be the trail's biggest fan. He also

helped make it a reality. "I was retired and looking for things to do," he recalled. "I got involved ... on a committee that was working on a master plan for recreation. At the same time, the Carolina Thread Trail was promoting this idea of a trail that would link a number of towns in the region. I went to a Thread Trail forum and could see these three little towns were ideally suited to meet the Thread Trail's goals of weaving communities together."

Riemann would eventually become Misenheimer's mayor. He said his fellow mayors liked the idea of linking their towns via a trail system: "Nothing happens between communities without cooperation. All three of our communities now feel invested in this."

The former mayor is quick to point out that work isn't over yet. "We acquired seven miles of the nine we want," he said. "We've still got holes to fill in."

The process of assembling the land for the trail and making it a reality wasn't easy. During the construction of the first section, the area had heavy rainfall – the kind it hadn't seen in more than 50 years. "We got a year's worth of rain – 40 inches – in one month," Riemann said. "The people building the trail had to stop work and come back when the rain subsided."

Keeping the trail clean is a labor of love for Riemann and his wife, Theda. They walk it nearly every day and can't help but look out for rocks that could get in a cyclist's way or "root loops" hikers could trip on. They enjoy doing their part, but trail maintenance falls under the purview of the nonprofit

Friends of North Stanly Trails and Parks, a dedicated corps of volunteers working hard to keep the trail safe and looking its best.

For users, though, the trail is easy to access and use. Its surface area is covered with gravel, crushed stone, natural surface or mowed grass. There's no cost, and dogs are welcome, as long as they're leashed. The trail meanders through a heavily canopied area, so it's a picturesque place for a walk or bike ride.

You can also take in a little history while out on the trail, which offers lake and farmland views and access to a number of historic buildings. Gladstone Academy (once an 1890s schoolhouse) is among them.

Lambert marvels at the energy the trail has brought to the region: "You can have this place that's just grass for the longest time and then you make it into a trail, and bam! Suddenly, hundreds of people are using it."

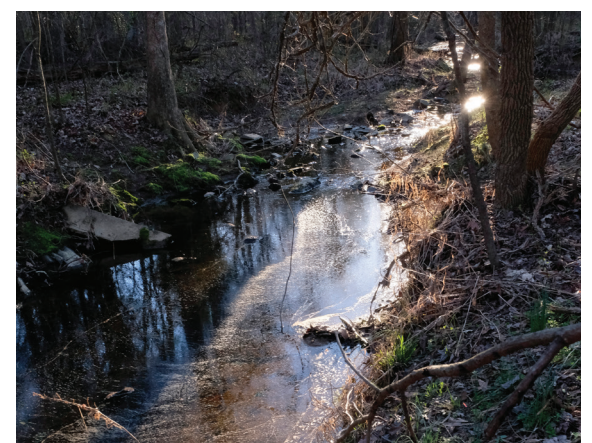


Photo by Nancy Pierce



LETTER FROM THE BOARD CHAIR

It has only been 10 years since the beginning of the Carolina Thread Trail, but in that single decade it has grown dramatically and has been enthusiastically embraced by our region. Originally conceived as a region-wide network of trails totaling 500 miles, the Thread Trail's first step was to ask each community to vet the trail system within their jurisdiction. That process of local input more than tripled the system to 1,600 miles, highlighting the value local communities place on trails and greenways. Building on that demand, the Thread Trail, in conjunction with local communities, has been able to complete and make accessible for public use 260 miles of trails and 170 miles of blueways to date.

Today the positive effects of the trail on communities throughout our region is more visible than ever. What a long way we have come! And it is all due to our active and involved supporters – donors, members, community partners, more than 2000 volunteers who got their hands dirty putting miles on the ground,

AND especially, the seven original corporate funders who launched the effort.

We have big plans for the next five years which include completing 70 miles of the 143-mile North-South Spine and connecting at least five miles of trail in each of our 15 counties.

I hope you enjoy reading about the progress we've made in places like Stanly County, where the Falcon Trail connects the towns of Richfield and Meisenheimer. This is just one example of how, through your support, the Carolina Thread Trail is transforming communities.



ALEX RANKIN, III
CESI, PRESIDENT

FIELD NOTES

#GIVINGTUESDAYCLT RAISES \$53,528 FOR CTT

We're excited to share that the Giving Tuesday CLT campaign raised \$53,528 for the Carolina Thread Trail. This year's campaign focused on water. A water supply study done in 2006 projected that with our region's continuing growth, the Catawba-Wateree River Basin, which currently supplies nearly 2 million people with water, will soon be unable to support our demand for water. Trails help preserve corridors of



Buffalo Creek Preserve

natural land buffers along creeks and rivers, which in turn protect our water. The Carolina Thread Trail now includes 150 of the 744 miles of planned trails that run along waterways. Your support has provided access to outdoor recreation and helped protect our region's water supply. Thank you for helping us connect you to the outdoors!

CAROLINA THREAD TRAIL PALE ALE RETURNS IN CANS

Last summer, CTT partnered with Blue Blaze Brewing to create a refreshing beer, the Carolina Thread Trail Pale Ale. It's been so popular that the initial inventory has sold out and there has now been a second round of production!

Blue Blaze Brewing, located on the Irwin Creek and Stewart Creek greenway segments of the CTT, donates 10 percent of profits back to the Thread Trail. Aside from Blue Blaze Brewing, the beverage can also be found at locations throughout Charlotte. Check out our website for more places to buy it!

FUNDS RECEIVED FROM COMMUNITY FOUNDATION GRANT OF GASTON COUNTY

The Community Foundation of Gaston County (CFGC) recently granted the Thread Trail \$100,000 to be used over the next three years to expand trails in Gaston County.

"The Community Foundation is proud to provide support to Catawba Lands Conservancy, and the continued expansion of the Carolina Thread Trail in Gaston County," Ernest Sumner, CFGC president, said. "Not only does the Carolina Thread Trail provide a way for people to get outside and exercise, but it connects our community and links together schools, parks and neighborhoods."



NEW TRAIL PROJECTS STARTING IN 2018

When you need to reconnect with natural greenery and travel to new locations, lace up your walking shoes and explore trails we are adding to the CTT in 2018.

HECTOR HENRY II GREENWAY – Concord, NC. A 2.4-mile natural surface trail located at The Mills at Rocky River development off of Rocky River Road. A parking area and trailhead are planned for early summer 2018. The trail is owned and maintained by the City of Concord.

SALISBURY GREENWAY – Salisbury, NC. A nearly 1-mile trail that will link Kelsey Scott Park and Jake Alexander Boulevard. This segment is part of the 5.5-mile Salisbury Greenway system.

CAROLINA THREAD TRAIL GOVERNING BOARD

Alex Rankin, III, – Board Chair – CESI, President

Shuford Abernathy, Abingdon Glen Village, President

William B. Allen, Republic Crane and Equipment Co., Retired President

Angela T. Bower, Union County Community Leader

John Collett, Collett Real Estate, Partner

Sally Daley, Girl Scouts Hornets' Nest Council, Former Executive Director

Donna de Molina, Community Leader

Jennifer DeWitt, Director, Foundation Programs and Community Affairs at Duke Energy Corporation

Dr. Michael Goodman, Wake Forest Baptist Health, Assistant Professor

Sherri Gregory, Lindsay Pettus Greenway

Dehler Hart, Springland Inc., President

Kelly Katterhagen, BlackArch Partners, Founder and Managing Director

Jim Lawton, Community Leader

Christine Li, Wells Fargo, Head of Corporate Market Risk Oversight

Dana Maness, First Bank, Vice President

Jamie McLawhorn, President, Marsh Properties

Bailey Patrick, MPV Properties, LLC, Managing Partner

Lat Purser, Chief Executive Officer, Lat Purser and Associates

Marshall Rogers, Owner of TWOROG Holding LLC, Retired

Keith A. Smith, Atrium HealthCare Systems, Sr. VP & General Counsel

H. Thomas Webb, III, Faison, President and CEO

Edward Weisiger, Jr., Carolina CAT, President and CEO

CONTACT

Office:
4530 Park Road
Suite 420
Charlotte, N.C. 28209
Info@carolinathreadtrail.org
704-376-2556
carolinathreadtrail.org



LITTLE SUGAR CREEK GREENWAY – Charlotte, NC. A 1.5-mile paved greenway addition connecting Tyvola Road to the existing greenway in Huntingtowne Farms.

MOUNTAIN ISLAND PARK TRAIL – Mount Holly, NC. A 1.5-mile natural surface trail extension along the Catawba River.

MOUNT HOLLY RIVERFRONT GREENWAY – Mount Holly, NC. A 1.7-mile paved trail linking Tuckaseegee Park to Mount Holly Municipal Complex near downtown.

LAKEWOOD GREENWAY – Cramerton, NC. A 1-mile paved greenway connecting Goat Island Park along the South Fork River to South Fork Village at Wilkinson Boulevard.

AVON/CATAWBA GREENWAY – Gastonia, NC. A half-mile paved greenway extending the existing greenway through Ferguson Park to Marietta Street.

STATESVILLE GREENWAY – Statesville, NC. A critical .25-mile paved greenway connecting the existing Fourth Creek and Gregory Creek sections of the trail creating a continuous 5-mile greenway.

CATAWBA RIVER TRAIL – Fort Mill, SC. Sponsored by Founders Federal Credit Union, a 2.3-mile natural surface trail addition along the Catawba River connecting the Piedmont Medical Center Riverwalk Trail to the Masons Bend section of the Catawba River Trail.

GROVER STREET PATHWAY – Shelby, NC. A 1.5-mile paved greenway connecting the First Broad River Trail to North Morgan Street.



Photo of Jeff Olson by Nancy Pierce

TRAIL FORUM KEYNOTE SPEAKER JEFF OLSON

TALKS OVERCOMING OBSTACLES AND THE IMPORTANCE OF THE THREAD TRAIL

By Rob Glover

For more than 25 years, Jeff Olson has changed the way the world is built. During his career as architect and planner of open spaces and greenways, he has been involved in some of the most prestigious alternative transportation projects in the U.S. and beyond. Jeff currently serves as a certified architect at Alta Planning.

Serving as the New York State DOT Bicycle and Pedestrian Program Manager in the mid to late '90s, Jeff supported the creation of an incredible 1,000-mile state-wide bike route system, the Erie Canal Trail and Hudson River Greenway, and a 350-mile greenway system which connects people throughout New York City.

When the National Park Service needed to retool the facilities at Grand Canyon National Park, Jeff stepped in as a Team Leader. His influence in the position helped shape the way more than 7 million visitors traversed the park while maintaining the integrity of what makes the place so special.

His class on pedestrian and bicycle planning at the University at Albany is the first such course in the nation. As an author, his book *The Third Mode* is a prescription for building better communities through green design. And as a speaker, Jeff tours the country sharing the inspiration and information local communities need to develop their own greenway projects.

It was after such a talk, the keynote address during the Thread Trail's 10th Trail Forum on December 7, that we caught up with Jeff (or rather, he kindly slowed down for us). During our talk he offered his thoughts on inspiration, challenges and the tremendous progress of the Carolina Thread Trail.

What inspired you to get involved with greenway design and construction?

When Jeff was a teenager he wanted to take his girlfriend to the movies. Just shy of getting his driver's license, young Jeff had to rely on his dad to drive them, as there was no safe way to ride a bike or walk to the theater. The dependence on automobile travel made a profound impression on the young man.

"That experience made me want to go into design and literally change the way the world was built," said Jeff.

Over the years, Jeff said he's been inspired by a shift in how people think about where they want to live. Real estate agents, for example, now grade neighborhoods on their walkability. Alternate modes of travel such as ride sharing, public transit, and bikeable greenways have left people waiting longer to get their driver's license. It's a shift, he says, where people want to be more independent and live in places that are sustainable. In some ways, these projects are having even more profound, if unexpected, results.

"We didn't know that our kids would be spending so much time in front of screens," Olsen says. "Or that we were doing something that provides them time away from that. Just this idea of going place to place while spending time outdoors, it's this whole different thing."

**GREEN SPACES AND TRAILS
RANKED #1 AND #2 RESPECTIVELY
AS THE MOST SOUGHT-AFTER
COMMUNITY FEATURES IN A
RECENT STUDY OF POTENTIAL
HOMEBUYERS BY THE REAL
ESTATE ADVISING COMPANY
ROBERT CHARLES LESSER & CO.**

What is the biggest obstacle you see facing trail projects like the Thread Trail?

Jeff admits that, even for an experienced planner, these projects are challenging. Amongst all the obstacles that stand in the way of trail building teams, one stands out. "Money is the biggest threat, unfortunately," said Jeff. "I say unfortunately because we live in a very wealthy country. We have the resources to be doing this."

It's important, he says, to remember that it's not really about the money.

"It's very common to see highway projects in

the hundreds of millions of dollars. It happens all the time. And yet when people talk about prioritizing funding for a regional trail network, many are skeptical. The obstacle isn't the money itself, it's our value decision of what we choose to spend money on."

How does the Thread Trail compare to other developing trail systems in the US?

The Atlanta Beltline, he said, is using an interesting funding strategy where increased revenue from one section of the trail is paying for the next. "They're building a core trail and it's encouraging economic development to happen."

He calls out the Emerald Necklace in Boston, where a century of trail building dating back to the Olmsted era of the late 1800s has left the city with an expansive, interconnecting trail system. And in Minneapolis, a generous donation of land led developers to connect lakes and parks with an intricate web of trails.

But the Thread Trail, Jeff says, is different. "It's one of the trendsetting projects in the country." Jeff points to the 10 years of philanthropic seeding the Thread Trail has garnered as one of the exceptional stories in trail building. It's only one of a small handful of projects that have had such long-term, grassroots success, he recalls.

Also, unlike Boston, Charlotte's urban core is relatively new. Jeff says the challenge of building a regionalized trail system in a rapidly growing, newer city can't be overlooked.

But for Jeff, the biggest differentiator that makes the Thread Trail so special is the people. "Having 200 people at a conference like this. That's powerful."

"The heart and soul of the trail movement isn't about making money and investment," he continued. "It's just people with big hearts who want to do something good for their community."

According to Jeff, there is a very meaningful action every person currently involved in the Carolina Thread Trail could do right now.

"If you could do one thing this year, if each person here got 10 more people involved. Just take the time to find 10 more people. Get people connected. That by itself will help change the world."



NEW EXPERIENCES ON THE THREAD TRAIL

In 2017, five new segments of the Thread Trail opened across the region, allowing outdoor enthusiasts to spot a diverse array of wildlife while venturing into uptown Charlotte, parks, the town of Troutman and even a farmers market.

1

TOBY CREEK GREENWAY: PHASE 2

CHARLOTTE, NC

1.5 MILES / WALKING, RUNNING, BIKING



This new 1.5-mile section creates a paved greenway trail that branches off of Mallard Creek Greenway and allows visitors to walk, jog or bike through the campus of the University of North Carolina at Charlotte. The trail also serves as a connector to Clark’s Creek Greenway. The addition of the Toby Creek Greenway to the Clark’s-Mallard Greenway system provides a total of nine miles of greenway connectivity and a connector trail to North Tryon Street. A stream flows alongside the quiet trail, and butterflies as well as a canopy of blooming tulip poplars, sycamores and box elder trees can be seen in the summer months.



Photo by Nancy Pierce

Toby Creek Greenway

2

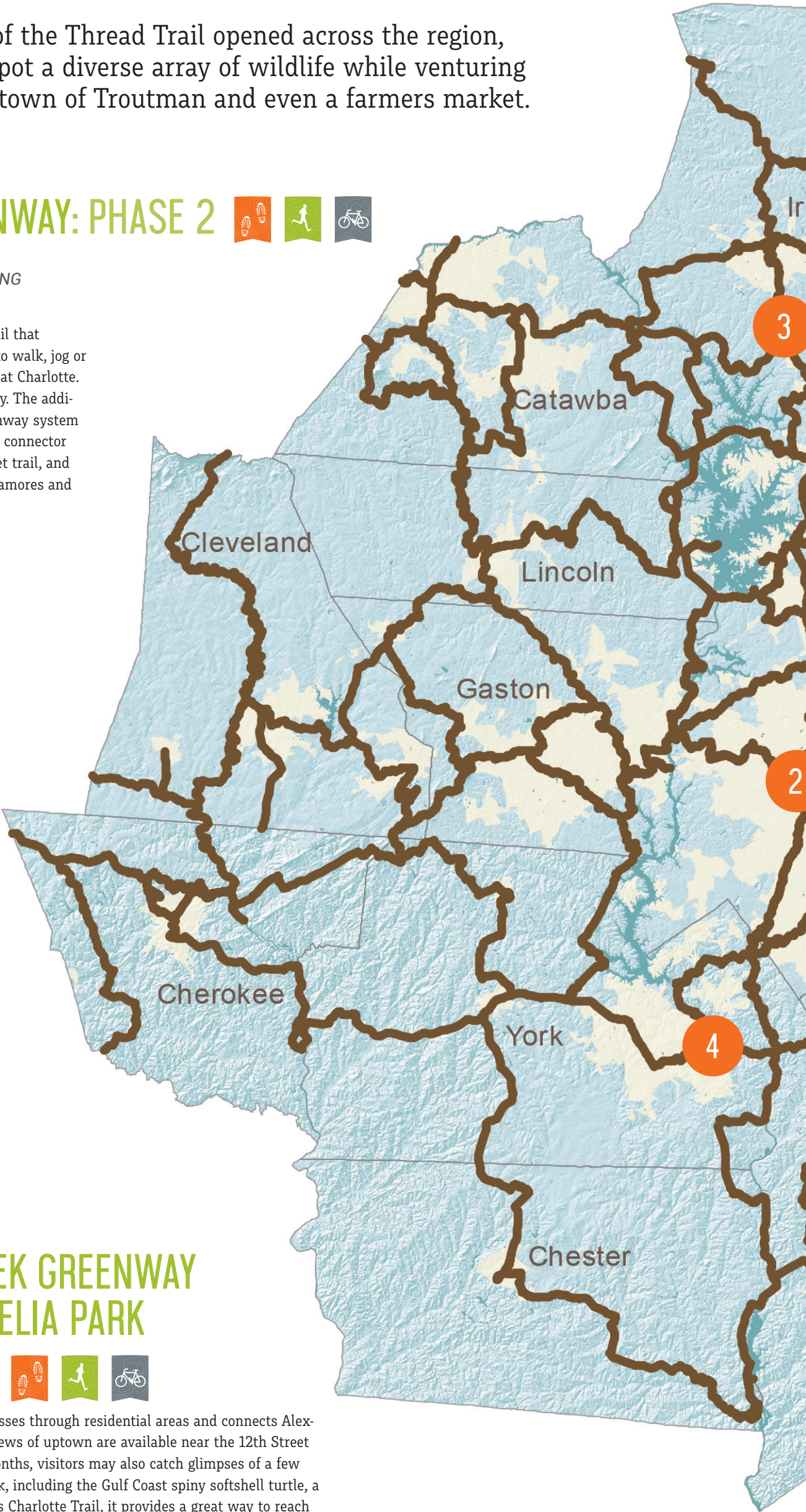
LITTLE SUGAR CREEK GREENWAY SEGMENT AT CORDELIA PARK

CHARLOTTE, NC

1 MILE / WALKING, RUNNING, BIKING



This paved segment of Little Sugar Green Greenway passes through residential areas and connects Alexander Street Park to Cordelia Park near uptown Charlotte. Views of uptown are available near the 12th Street entrance of this segment of the greenway. In the summer months, visitors may also catch glimpses of a few species of turtles that make their homes in the restored creek, including the Gulf Coast spiny softshell turtle, a flat turtle with a nose shaped like a snorkel. Part of the Cross Charlotte Trail, it provides a great way to reach the sports fields and playgrounds of both parks by foot.





THREAD TRAIL MASTER PLAN



3

RICHARDSON GREENWAY



TROUTMAN, NC
.25 MILES / WALKING, RUNNING, BIKING

This now 2-mile rail-to-trail conversion runs through the center of the town of Troutman and community of Barium Springs from Frazier Loop to Rumble Street. The greenway links the heart of Troutman, including downtown, Town Hall, Troutman Elementary and Middle schools, as well as a mix of offices, civic buildings, residences and commercial properties to the Troutman Village Shopping Center. This segment of the Thread Trail is also part of the Lake Norman Bicycle Route. One major trail highlight is the Troutman Depot, home to a farmers market on Saturdays during the summer.

4

CATAWBA RIVER TRAIL – MASONS BEND SECTION



FORT MILL, SC
1.5 MILES / WALKING, RUNNING, BIKING

This shared-use natural surface trail along the Catawba provides scenic river overlooks and wildlife viewing. The trail was built in conjunction with the Masons Bend residential community and serves as a coveted amenity for residents and the general public. For visitors living outside of the development, two small parking areas are provided for trail access. The Masons Bend segment will soon link to the Piedmont Medical Center Trail at Riverwalk via construction of another 2.3 mile section along the river to be completed in late summer 2018. This will give trail users access to over 6 miles of continuous Thread Trail.



Masons Bend

Photo by Bret Baronak



Rocky River Blueway at RROPP Park

5

ROCKY RIVER BLUEWAY



MIDLAND, NORWOOD, OAKBORO, WADESBORO, NC
49.5 MILES / PADDLING

The Rocky River Blueway starts at Pharr Family Preserve in the town of Midland and continues for about 49.5 miles, where it flows into the Pee Dee River for another 19 miles to the Blewett Falls Lake Access in Lilesville. This undammed water path provides long-distance flatwater kayaking and canoeing opportunities. There are seven canoe and kayak launch points located along the course. More than 50 species of birds call the area home, including the prairie warbler, prothonotary warbler, redheaded woodpecker, great blue heron, eastern meadowlark, pileated woodpecker and kingfisher. Those with a keen eye may spot butterfly species like the Carolina satyr and floodplain trees such as the bitternut hickory, sourwood, cottonwood, swamp chestnut oak and black walnut along the route.



SPOTLIGHT: VOLUNTEER OF THE YEAR

WHIT STRUNK



volunteer for CLC and CTT since 2015, Whit is a Trail Master, Thread Trail Ambassador and Land Stewardship Committee member. He’s donated more than 300 hours of service to advance the Thread Trail, as well as supported strategic activities to ensure conserved properties managed by CLC are maintained properly.

“I believe conserving land and providing activities where people can enjoy nature is more important than ever,” Whit said. “Catawba Land Conservancy and Carolina Thread Trail provide me with a number of opportunities to work with others holding a similar belief. Volunteering is also good for my spirit, mind and body. John Muir reflected my experience when he said, ‘In every walk with nature one receives far more than he seeks.’”

Whit always offers to lead projects, whether they are creek crossings, managing kayak rentals during National Trails Day, doing trail construction work with volunteers or tracking trail maintenance issues. He strives to get to know other volunteers and naturally builds a team during workdays. His warm personality and ambitious attitude creates a fun and gratifying environment for everyone around him!



Whit Strunk with Stewardship Director Sharon Wilson at Trail Forum

Photo by Nancy Pierce



VOLUNTEER WORKDAYS

HOW YOU’VE HELPED US ADVANCE THE THREAD TRAIL IN 2017

We recruit and train volunteers to help build and maintain segments of the Thread Trail across the region. In addition to nine workdays throughout the year, we also hosted 11 corporate teams.

In 2017, we cleared the Scott Preserve Trail, hosted National Trails Day, sponsored by REI, at the South Fork Trail and River and co-hosted National Public Lands Day at Ridgeline Trail with Crowders Mountain State Park.



Merrill Lynch workday at Long Creek Preserve Trail



Seven Oaks Preserve Trail workday with Husqvarna Group

2017 CORPORATE WORKDAYS

- **April 14** – Forney Creek Trail with Heartwood Tree Service – Removal of Emerald Ash Borer trees.
- **May 19** – South Fork Trail with Carolinas HealthCare System – Eliminated invasive species.
- **June 9** – Seven Oaks Preserve Trail with Husqvarna Group – Took down 46 trees that were diseased, dead or dangerous, as well as clearing invasive species.

THE 10TH ANNUAL TRAIL FORUM

REFLECTING ON 10 YEARS OF TRAIL FORUMS

For a decade, more than 200 professionals and community leaders have been coming together to advance this region’s trail and river network during the annual Trail Forum. Through collaboration and cross-municipal partnerships, the Carolina Thread Trail is getting closer to a connected 1,590-mile reality. We’re grateful to the presenters for sharing their expertise, the exhibitors for offering their services to Thread Trail projects, the sponsors for helping us host the conference and the volunteers for assisting in running this daylong event. Most of all, we’re thankful for the continued efforts of our attendees as practitioners and advocates to expand trails in this community! We would like to extend our deepest gratitude to our lead sponsors Arboguard and REI for the 10th annual Trail Forum.

Thank You to Our Sponsors!





Prescribed burn at Buffalo Creek Preserve



2017 GRANTS RECEIVED

DUKE ENERGY HABITAT
ENHANCEMENT GRANT

\$16,000 to support native plant resto-
ration and increase biodiversity on eight
acres of the Seven Oaks Preserve property
along Lake Wylie adjoining Daniel Stowe
Botanical Garden.

THE CARRIE E. AND LENA V. GLENN
FOUNDATION GRANT

\$12,000 to fund enhancements along the
South Fork Trail in McAdenville including
trailhead improvement, native tree resto-
ration, invasive species removal, graffiti
removal and treating trees against the
emerald ash borer.

CARDINAL FOUNDATION

\$3,000 for Buffalo Creek Preserve habitat
restoration, including a herbicide spray
and burn in 2018.

AGRICULTURAL CONSERVATION
EASEMENT PROGRAM

(UNITED STATES DEPARTMENT OF
AGRICULTURE
AND NATURAL RESOURCES CONSERVATION
SERVICE):

\$346,000 toward protecting Piedmont
Jerseys farm (Eaker Farm) in Lincolnton.

NORTH CAROLINA AGRICULTURE
DEPARTMENT AND FARMLAND
PRESERVATION TRUST FUND

\$187,000 toward protecting Piedmont
Jersey farm (Eaker Farm) in Lincolnton.

NORTH CAROLINA CLEAN WATER
MANAGEMENT TRUST FUND

\$143,000 for purchase of 28 acres for a
segment of Thread Trail in Lincoln County.



CAROLINA THREAD TRAIL
2017 GRANTS TO THE COMMUNITY

To date, the Thread Trail has granted more than \$5.7 million to local communities as a catalyst for putting miles of trails on the ground. Local communities and nonprofits with adopted master plans can apply for grants to support trail planning, building or maintenance. Often these funds are leveraged into matching funds from state and federal funding sources.

In 2017, the Thread Trail awarded 11 grants totaling **\$304,390!** Congratulations to all of this year’s grant recipients:

BROAD RIVER GREENWAY

\$26,500 to construct a canoe launch on the
Broad River.

IREDELL COUNTY PARKS AND
RECREATION

\$9,440 for a planning study to determine the
route for Fourth Creek Trail.

CITY OF CONOVER

\$19,850 to purchase trail easements to
extend Lyle Creek Greenway to Newton-
Conover Elementary School.

CITY OF ROCK HILL

\$50,000 to design and construct Manchester
Trail, which will connect the existing
Catawba River Trail at River Park to
Manchester Park.

HISTORICAL ASSOCIATION OF CATAWBA
COUNTY

\$15,000 for the acquisition of the Carson-Rose
Property.

CITY OF SALISBURY

\$100,000 to cover the remaining cost of
construction of trail connecting Kelsey Scott
Park to Jake Alexander Boulevard.

CITY OF SHELBY

\$35,000 for the detailed corridor plan to
evaluate the corridor in anticipation of
development of the Shelby Rail Trail.

TOWN OF HUNTERSVILLE

\$15,000 for the Trail Corridor Study to
determine the appropriate route, feasibility
and property ownership status for the Torrence
Creek – Rosedale Greenway connector segment
from I-77 east to downtown Huntersville.

TOWN OF MATTHEWS PARKS,
RECREATION AND CULTURAL RESOURCE
DEPARTMENT

\$30,000 to fund the engineering and design
cost for the 1.25-mile Sam Newell Pathway.

TOWN OF MCADENVILLE

\$1,100 to cover a portion of trail easement
survey costs on three contiguous properties in
McAdenville.

LINCOLN COUNTY PLANNING

\$2,500 to construct a wooden bridge that will
span the creek on the southern portion of the
Rock Springs Nature Preserve.



Future trail connecting the South Fork Rail Trail to the Marcia Cloninger Rail Trail

CAROLINA THREAD TRAIL
2017 GRANTS RECEIVED

COMMUNITY FOUNDATION OF GASTON COUNTY **\$100,000** to expand trails in Gaston County.

LINCOLN COUNTY COMMUNITY FOUNDATION **\$5,000** for trail development to connect South
Fork Rail Trail to Marcia H. Cloninger Rail Trail in Lincolnton.

REI **\$10,000** in underwriting for Trail Forum.



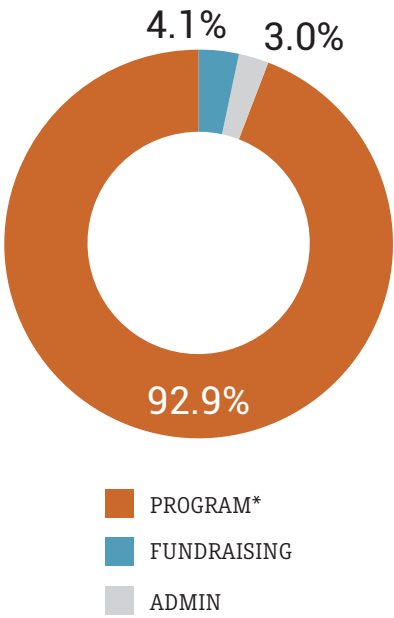
CATAWBA LANDS CONSERVANCY FINANCIAL REPORT

OPERATING BUDGET SUMMARY 2016-2017 GENERAL FUND¹

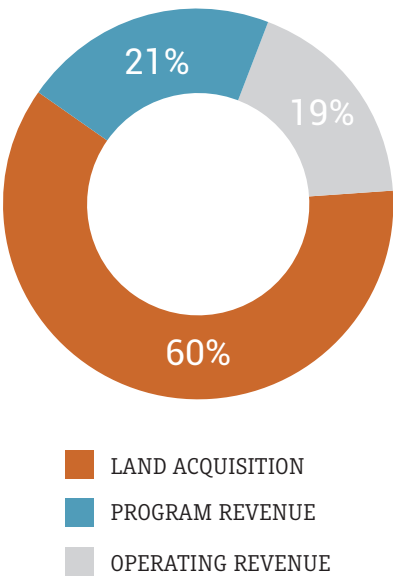
REVENUE		2016	2017
	Donors	\$1,020,308	\$520,811
	Foundations & Govt.	\$153,614	\$87,280
	Corp. Partners	\$263,159	\$286,451
	Other	\$7,335	\$36,865
	Stewardship Transfer	\$25,000	\$25,000
	Total Revenue	\$1,469,416	\$956,407
EXPENSES	Compensation	\$533,723	\$521,998
	Office/Administrative	\$159,783	\$160,410
	Outreach & Development	\$144,870	\$132,988
	Total Expenses	\$838,376	\$815,396
	Operating Net	\$631,040	\$141,011

1. Unaudited. Excludes restricted project revenue and costs, including land acquisitions and Carolina Thread Trail.
2. 2016 Includes one-time \$536,000 gift.

2017 FUNCTIONAL EXPENSES* UNAUDITED

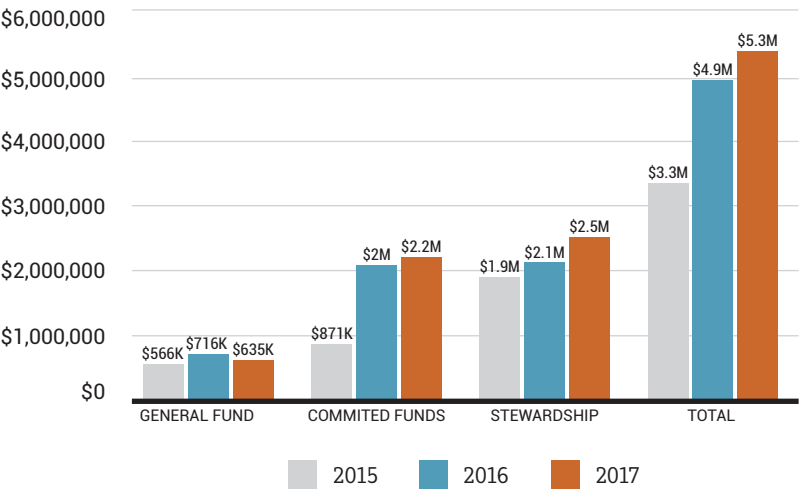


2017 REVENUE UNAUDITED \$5,200,000

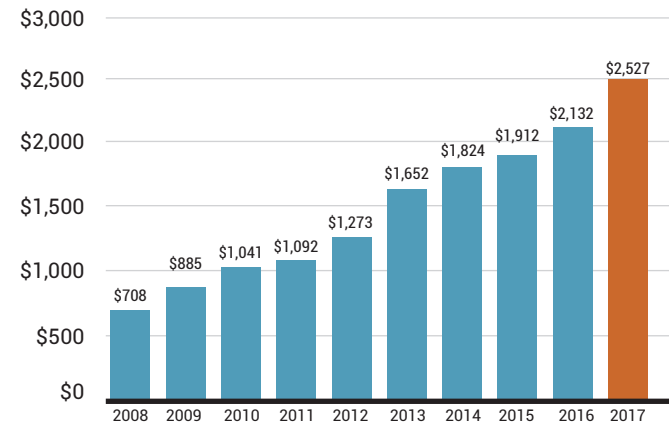


*As reported in the Form 990. All expenses, including CTT and land acquisition costs

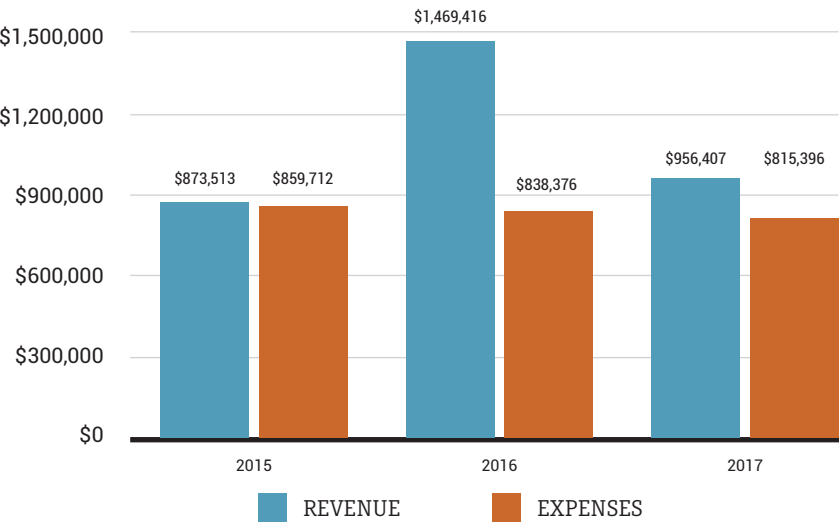
CASH BALANCES



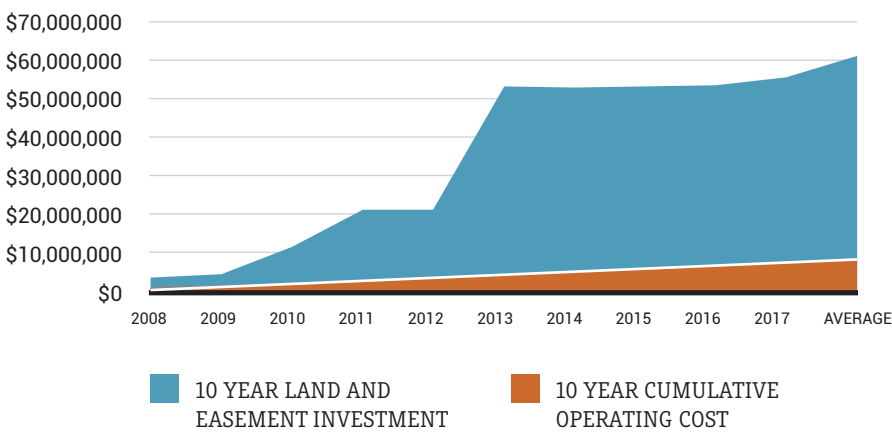
STEWARDSHIP & LEGAL DEFENSE FUND



GENERAL FUND REVENUE & EXPENSES



LEVERAGING CAPITAL FOR CONSERVATION





CLC 2017 DONORS

Our donors' generous support each year enables us to pursue our mission of saving land and connecting lives to nature. This list includes gifts that were made during the 2017 calendar year.

**Donor for 10 consecutive years*

- MAGNOLIA - SOCIETY

In honor of our 25th anniversary, this giving circle of passionate supporters has committed five-year pledges that provide for operational stability and dedicated funding for land acquisition during this critical period of growth. Named for the bigleaf magnolia, CLC's most impressive protected plant species, this group represents the greatest commitment to our mission.

CT and Dante Anderson
Philip and Amy Blumenthal
Phillips and Leslie Bragg
Ann and Ric Browning
Jarred and Emily Cochran
Nancy and Ralph Falls

Walter and Michele Fisher
D. Scott Pyle and Eileen Friars
Andy and Claudia Heath
Jim and Becky Hovis
Kelly Katterhagen and Larry Nabatoff
Jud and Deborah Little

Jonathan and Marianne Mangels
Tom and Robin McCoy
Tim and Julianne McCollum
Bob and Sally Miller
Bill and Katharina Mumford
Tom and Amy Okel

Richard J. Osborne
Tim and Nancy Paschall
Lat and Kathy Purser
Laurie Smith
Jack and Melissa Sullivan
Bill and Rita Vandiver

Chet and Christine Walker
Henry and Jenny Ward
Kathryn Heath and Tom Webb

- CATAWBA - SOCIETY

Catawba Society was formed in 2007 as a giving circle of CLC's most generous donors. Through leadership gifts of \$1,500 and more, members provide significant financial resources to support CLC's operating fund. To learn more, visit catawbalands.org/membership.

\$10,000+

Philip and Amy Blumenthal
Kathryn Heath and Tom Webb*
Jud and Deborah Little*
Sally and Bob Miller
Amy and Tom Okel
Ruth and Colin Shaw
Charlton K. Torrence, III*
Rita and Bill Vandiver*

\$5,000+

Anonymous
Ann and Ric Browning*
Teddy Chapman
Dr. and Mrs. Clay Harrell
Andy and Claudia Heath
Jeff and Mimi Kane
Kelly Katterhagen and Larry Nabatoff
James and Sandra Keffer
Robert and Esten Mason
Tom and Robin McCoy*
Lat W. and Kathy Purser
Ken Samuelson

\$2,500+

Daila Allen

Alice and Benton Bragg*
Leslie and Phillips Bragg*
Bill and Veronica Clark*
Peter and Nancy Covington
Anne Davidson
Nancy and Ralph Falls*
Walter and Michele Fisher
Anne and Peter Gilchrist*
Libby Griffin and Lee Chambers*
Jim and Becky Hovis
Julie and Howard Levine
Jonathan and Marianne Mangels
Julianne and Tim McCollum
Kenneth and Jean McCoy
Sinclair and Robert McLean
Richard and Dorothy Metzler
Bill and Katharina Mumford
Richard J. Osborne
Tim and Nancy Paschall
Eddie and Joyce Poe*
D. Scott Pyle and Eileen Friars*
Robert and Anne Schleusner
Allen and Sarah Shifflet
Laurie Smith
Laura Stanley-Duffy and Don Duffy
Jack and Melissa Sullivan
Chet and Christine Walker
Jenny and Henry Ward
Edward Weisiger, Jr. and Betsy Fleming

\$1,500+

Dale and Nancy Allison
Vernon and Gloria Anderson*
Bill M. and Harriet Barnhardt*
Alison and Bradford Barry
Raymond and Mary Boardman*
Chris Bolling
Crandall and Erskine Bowles
Catherine and John Bragg*
Kathy and Frank Bragg*
Nancy and Nick Bragg*
Robin and Bill Branstrom
Charles and Margot Brinley
Thomas Bunn
Greg and Mary Lou Cagle*
Robert P. Caldwell, Jr.
Curtis and Dudley Carlson*
Saxby and Elizabeth Chaplin
Kathryn V. Clancy
Nathan and Laura Clark
Dan Clodfelter and Elizabeth Bevan
Emily and Jarred Cochran
Robin Cochran
William J. Craemer
Rush and Kenneth Coe
Peter and Sandra Conway
Hal and Cynthia Curry*
Alvaro and Donna de Molina

Deborah and John Dohan
Charles and Mary Edwards
Doug and Patricia Faris*
William and Linda Farthing
Jill and Smitty Flynn
Alex and Patty Funderburg
Tom and Sherard Anne Gates
Mark and Liza Gosnell
John and Lisa Hairr*
Carol and Watts Hamrick
Bill and Linda Hodges
Kim V. Hombs
Martin and Page Hull
John and Maria Huson*
Bob and Mindy Jones
Adam and Margaux Karagosian*
Charlotte Kidd
Philip and Susan Kuttner*
John and Michelle Mader
Dr. Marie-Claire Marroum, M.D.*
Tomas Mathews
David and Kate Maynard
Susan and Martin McCoy
Dan and Laura McCready
Arrington and Burch Mixon
Ron and Amy Nason
Anna and Tom Nelson*
Lisa and Mike North*

Don and Jill Olmstead
Harlee and Gary Palmer
Charles Peach and Pamela Pearson
John and Ann Porter
Michael Ranson
Mr. Redneckcheck*
Joseph and Linda Roberts*
Patricia Rodgers
Chris and Vickie Rolfe
Ed and Carla Rose
Katie and Steve Scruggs*
Lisa and Glenn Sherrill*
Mark Stanback and Nancy Popkin*
Paul and Dia Steiger
Lucy and Louis Stephens
Glenn and Deb Stewart
Becky Stoever
Richard M. Stowe, Jr.*
Lillian and Chris Teigland
Carla and Larry Vitez*
Christopher and Lauren Walker
H. Allan and Joyce White
Mike and Prince Witt
James B. Wolf and Mark Propst*
Dr. T. Price and Mrs. Margaret Zimmermann*

- CATAWBA - CORPS

\$1,000+

Melvin Andersen
Weston and Marty Andress
Dan Bodien
Ginny and John Collett
Susan and Charles Dalton
Marie Ann and Eugene Daniels*
Jennie and Leigh Derby
Walt and Trudy Donham*
Jon Dressler
J. Porter and Vicki Durham
Travis and Lise Hain
Kim Harwell
Barnes and Cammie Hauptfuhrer
Pamela and Herrick Hay
Terry Katon
Bill Keenan and Mary Barry
William and Kathryn Kirk
Bonnie and Eric Krempa
Andrew and Sarah Kromer*
Nicholas Langrall
Barbara Laughlin
Pete and Page McEachern*
Chuck and Lindsay Meakin*

MaryAnn Mueller and Diana Travis
Scott Phillips
John Pickett
Sally and Russell Robinson
Steve and Anne Schmitt
Dr. and Mrs. John B. Schug*
Donna Thrasher*
Ronald and Gayle Underwood
Mary Virginia White
Robert and Sarah Yavorski

\$500+

David Accipiter and Elaine Corvidae*
Michael and Anne-Mari Alexander
Chris Alexander
Laura R. Allen
Charles Allison
Stanley and Judy August
Mary Lou and Jim Babb
William and Patricia Barnes
John and Anne Barry
Tim and Sarah Belk
Scott and Betsy Bodien*

Jean C. Boggs
Katherine Boyd Rankin
Doris Anne Bradley*
Robbie Branstrom
Angela and Ralph Breeden
William and Elaine Brooks
Gary and Elizabeth Broome
J. Doug Buchanan
Cindy Caldwell
Rebecca Canady
David and Jo Clark
Mary I. Council
John Crosland, III
Leslie and John Culbertson
Patrice Ebert
Leonard Fumi and Lucy Quintilliano*
Clay Gaitskill
Gastonia Medical Specialty Clinic, P.A.
John and Alicia Gaul
Charles and Sylvia Gill
Barry and Karen Greenblatt
Dale F. Halton and Fred Wagner*
Maxwell Hanks and Belinda Butler
Sasha and Grant Harbrecht
Peggy Harrington
Mark Heitbrink
Andre Hester
Barbara B. Hiestand*
Johanna Hvitfelt
Michael and Cynthia Jones*
William and Jenny Joyner
Andy and Florence Kane*

David and Rebecca Klepser
Harry Lancaster and Jane Henderson*
Paula Lombardi
Michael Lucente
Gus and Geary Mandrapilias
John McGee
Richard I. McHenry
Jack and Pat Meckler*
Mark and Midge Miller
Jeff Lemons and Deborah Murphey
Rolfe Neill
Tom and Kathleen O'Bannon
Mr. Jim Parker
Bailey and Mildred Patrick
Sonia and Adam Perillo
Henry Pharr
Haywood and Sabine Rankin*
Karin Rankin
Richard and Sarah Park Rankin
Tom and Susan Ross
Elaine Scott and Gerald Tylman
Stephanie Schwarz
Donna and Chip Sell
Fern Shierson
Bonnie Stafford
Mr. and Mrs. Verner E. Stanley, Jr.
Brenda Stevens
Arthur and Lisbeth Stockman*
Whit Strunk
Erik Tolsma
Samuel Towne
Dr. and Mrs. Steven L. Tracy*

James and Kelly Trexler*
Donald Tyson and Katherine Sparrow
John and Kate Vassallo
Peter and Vivian Vogt*
Ellen Wagoner
Debra and George Warren*
Charlie and Lydia Williams*
Beverly and Joel Wissing

\$250+

David M. Alexander
Judy and Jim Allison
Amanda and Bob Anders
CT Anderson
Jay and Sylvia Bajorek
Mr. and Mrs. Carroll Barger
Dale and Ann Bass
Kim and John Belk
Andrew and Christine Beloni
Anita and Jeb Blackwell
William J. Blair, IV
Nancy Blue
William and Betsy Blue
John and Jennifer Blumer
Barry Bobrow and Karen Knoble
Gay Boswell
Charles and Mary Bowman
Kristi and Jason Brannon
Jan and Jim Brittain*
William and Robin Buckler
Matthew and Suzanne Churchill



Barbara and George Climer
Ceasar Cone, III*
Marion and Norma Cowell
Richard Crenshaw
Rennie Cuthbertson*
Sally and Michael Daley
Joe Davant*
Scott and Catherine Denham
Alesia Dicosola
Miriam A. Dixon
Elyn and Mike Dortch
Carol and Mike DzvoniK
Louis Eubanks
Donald and Frances Evans
Mary Brook Ewing
Henry and Anne Flint
Shirley Frank
Jeanne and Robert Fuller
Jim Garges
Don and Kathy Gately
David and Sinclair Gillespie
Wilson Glasgow
Rosemary and Richard Goodall
John Gregory
Amy Grissom
Deidre and Clay Grubb
Karen Hales
David and Mary Hall*
John and Irina Hamrick*
Lora Hamrick
Steve and Suzy Hannon
John and June Harrison
Robert Hayes
Anne and Perrin Henderson
Janet F. Hince*
Amy and Johnny Hines
Steven and Christie Hinshaw
Barbara A. Huffman*
Courtney Hyder
Abigail Jennings
Aprill Jones
Chuck Jones
Jennifer Jones
Kevin Kelly
Kent and Bess Kercher
Lorraine Kieffer
Kay Killian
Dr. and Mrs. David R. Kirlin*
Charles and Patricia Klapheke
Addison and Jason Kon
Henry A. LaBrun
Kylan Lamont
Mr. and Mrs. David L. Lawing*
Gary and Donna Lerner
Lin and Gary Leslie
Janet E. Levy*
Jon and Lisa Lindvall
Deborah Majewski
Mara Malakoff*
Scott Mansfield
Ed and Wendy Matthews*
James and Betsy Matthews*
Alice B. Mauney*
Bill and DeeDee Maxwell*
Brandon and Rob Mayo
Andy and Donna McClure
Bill and Bonne McCoy*
James R and Ashby McDonald
Elizabeth and William McKee
Patrick and Jocelyn McLaughlin
Mr. and Mrs. Steve McLeod*
Phillip McMillan*
Mark and Posey Mealy
Kevin and Laura Mikeworth
Caton and Charlie Morris
Gena Morris
Kimbrel and Trip Morris
Rebecca Morris
Lori and Randall Mountcastle
Lee and Gwynne Movius*
John and Meredith Murchison
J. Brandon Neal
Margaret Newbold
William Noonan
Katie Oates
Catharine Pappas
Jim and Callender Patterson*
Eric Pedersen
Carla and Eric Pence
Lisa and Mark Perkins
Tammy Pfaff
Birshal E. Poole
Randy and Jeanne Poole*
Natalie Pope
Rich and Woods Potts*
Sara L. Pressly
Heidi and Alan Pruess
Michael and Kay Rankin
Max and Fran Redic
Al and June Rhyne
Mr. and Mrs. David R. Rogers
Ann and Ed Rowell
Kathryn Sain
Robert and Sally Saussy
Jason and Molly Schugel
Steve and Gale Schwartz
Jay and Rebecca Scroggins

Glen and Blenda Singletary*
Bob and Caroline Sink
Morris and Pattie Spearman
Taylor and Jessica Stanfield
Mary and Peter Stauble*
Caroline and David Stedman
James and Martha Stenhouse*
Patrick and Sally Stout
Frank Stroupe
Claudia and Wes Sturges
Jean M. Sullivan
Charles and Leighann Swanson
Scott and LynnErin Tyler
Harald and Barbara Vaher
Jeff and Noelle Vandiver
Jim and Linda Wallace
John Watson
Cathy and Mike Weaver
Lynn Weis
Jackie Wells
Gerald and Nancy White
Mrs. Eugenia N White
Sharon Wilson*
Gary N. Wirth*
Gaenel Witherspoon
Emily and Jenner Wood
Joe Hamrick and Phyllis Woods*
Amy and Julian H. Wright
Anne and Fletcher Wright

\$100+

Mary W. Adams
Charles W. Allison, III
Mr. and Mrs. John Anderson, II
Bill and Ellen Archer
Candace Armstrong
David W. Arone
Stephen and Jeanne Bailey
Cathy Barnette
Brooks and Jane Barnhardt
William B and Elsie Barnhardt
Julia H. Barringer
Edwin Bartine and Elizabeth Gwynn
Richard M. Bell
Barbara and Mike Bernath*
Bob and Sandra Bisanar
Robert and Alice Bischoff
Paula Black
Robert Blanton*
Alan and Rosalie Blumenthal*
Douglas Bollerman
Elissa Bolling
Bob Blichmann and Betsy Bond
Amy Brooks and Chris Paradise
Katie and Bill Brown
Nancy and Al Brown
Mr. and Mrs. Herbert H. Browne, Jr.
Pat Brugh
Harry and Ruby Bryant*
George and Mary Lou Buck*
Buffalo Exchange
Roger and Joyce Burt
Sally H. Byrd
William and Nena Cahill*
David and Lynn Caldwell
Robert C. Carpenter*
Chuck and Becky Cheney
Milt and Carol Childress
Dr. and Mrs. Alan B Clark
John Collier
Nancy Conrad
Robert W. Cook*
Ernest and Georgianna Cox
William and Susan Coxe*
Charles O. and Suzanna Dalton
Christopher and Elizabeth Daly
Davidson Garden Club
John Michael Davis
Thomas and Nancy De Vries
Dr. David J. Deas
Bryan Denton
Ann Depta
Fred DeVore
Dr. Donald Dickmann
Jean G. Dixon
Dr. G.H. Dornblazer
Virginia Dulaney
Jim Dumser
Benjamin Ellis
Mr. Pat Ellison, II*
Tere and Doug Ey
H. McDonald Felder*
Carol Fogarty*
Frank and Janet Fortner
Kristin Foster
Robertta Fox and Mark Ostrander
Brad and Diana Freeman
Anne B. Furr
Buddy and Cheryl Furr
Carol Gallant
Sarah and Frank Gentry
Thomas and Debra George
Donald S. Gillespie, Jr.*
Mary May and Richard Gillespie

Jane Gorman*
Robert and Molly Griffin*
James Haden
Henry Haithcox, Jr.
William Harrison
Rodger and Karen Hartwig*
Mr. and Mrs. John B. Haynes
Bill and Linda Hefner
Rebecca and Mark Hefner
Sharon L. Heinrich
Carmen D. Henderson
David L. Henderson
Megan and Miles Highsmith
Charles and Pamela Hodge
Raymond and Sylvia Holmes*
Mr. and Mrs. Robert C Hord, Jr.*
Damon Houghton*
Robert and Ann Howard
Erma Deen Hoyle
William and Katharine Hubbard
Frank and Colleen Huber*
Charles Huff
Michael and Jodie Iagnocco
Karen and John Jacob
Brian and Sarah Jenest
Edward and Leslie Jenkins*
Todd Jenkins
Patrick and Elizabeth Kelly
Hatcher and Linda Kincheloe
Eric Kjellberg
Patricia Korn
Jeffrey and Liza Kravis*
Mary Ann Lawler
Jim and Lynn Lawton
David and Janet Layne
Diana Leathers and Charles Hedrick
Lou and Tamara Lesesne
Jonathan Levin
Christine Li
Inta and Bob Lidz
Prescott and Maria Little
Chris and Terry Loeb
Harriet Long
Mary and Bill Lunsford
Robin and Neil Mara
Walter Marcin
Steve and Diane Marsfelder*
Ann Marsh
Gary Marshall
Vickie and Charles Martin*
Heather McCullough
Barbara and Charlie McRee
Kiran Mehta
Dr. and Mrs. George R. Miller*
Jonathan and Kim Miller*
Diana Mitchell
Amy Montague
Tom and Jackie Mooney
Al Mullen*
Cynthia L Mynatt
Richard and Barbara Neidinger*
John and Alison Nolting
John Northey
Marsha J. O'Brien
John and Michelle Ong
Thomas J. Orr*
Ray Owens and Sally Higgins
Raymond L. Ozmore*
Mr. and Mrs. H. William Palmer, Jr.*
Ronald I. Parker
John Paschal
Philip and Mary Ruth Payne*
Charles and Helene Pearson
Sue Peck
Robert Peet
Randel and Emily Phillips*
Nancy Pierce
Dr. and Mrs. James A Pressly
Mrs. William H. Price, III*
Dr. and Mrs. James E. Pugh*
Lynn and Preston Purdum
Mary Purvis
Forrest Ranson
Judie R. Ratcliffe*
Scott and Matti Reider*
Dr. and Mrs. David A. Rinehart
Robert and Liz Rittase
Bill and Sandy RoorK*
Eliot and Shirley Rosen*
Donna Roth*
Carmen and Nancy Sarno*
William and Patricia Satterfield*
Louis A. Schmitt, Jr.
Greg Schneider
Patricia and Michael Schober
William Scullin
Benjamin and Ann Seagle
Marion and Chris Sekerak
Mary Setzer
Joe and Lori Siman
Roy and Mary Smart
Dorothy and Harold Smith
Thomas H. Smith, Jr.*
Norfleet N. Smith*
Janice and Kurt Sposta
Harvey and Donna Spurr
William and Nancy Stanback

Dr. Joseph Steiner
Robert Stevens*
C.D. Stroup, III
Bill and Teresa Sturges*
Ray Stutzman
Charles and Mary Sugg
Brenda Summers
Mark and Debbie Taylor
Barry and Leslie Teague
Chris and Fran Teter
Frank and Harriet Thompson
Jane and Rixey Todd*
Alice and Brent Torstrick
Robertta M. Tremain
John and Jenkins Trotter
Sally S. Van Allen*
Mitchell and Kathleen Varner*
Timothy and Cynthia Von Der Embse
Mr. and Mrs. Hamlin L Wade*
Mr. Clarence and Mrs. Heathy Walker
Dr. and Mrs. John T. Walsh
Dr. Thomas D Walsh
Mary T. Wannamaker*
Frank Warren
Tom Watson
Dr. and Mrs. John C. Watts
Michael and Marlene Way
John and Cam Wester
Suzanne and Kevin Whalen
Harriett M. Whitsett
Lawrence A. Wilson
Jennie and Ry Winston
John and Kate Worm
Laura Yaeger
Andrew Yavorski
Melinda Yelton

\$50+

Bryan and Candace Abinanti
John Alday and Rebecca Fant
James Alderman
Jennifer Aldridge
Trevor Aldridge
Betsy Alexander*
Jean Anderson
Beth Armour*
Sarah and Hugh Ashcraft
Lamar and Brenda Ashe
Luz Maria Aveleyra
Kate Baillon
Ann Ballard*
Harold and Carol Bankirer
Gordon Barber
Elizabeth Birch
Dr. and Mrs. T.R. Blackburn*
Sean and Mandy Bloom
Wayne and Nora Bolick
John Bonestell*
Bill and Alice Brafford
Isabel and Thomas Brantley
Judy Breault
Alfred M. Brown, Jr.
Ron and Nancy Bryant
Christopher and Amanda Buchanan
Donald and Michele Burton
Keith Camburn
John Campbell
T. Kern and Nancy Carlton
Robert Carr
Doris Chevalier and Cem Saydam
George W. Clark
Gwen and Charles Cook
Steve Copulsky
James and Susan Cunningham
Mary Anne Curlee
Dr. William A Current, Sr.
Clayton S. Curry, Jr.
Robert Dalley
Leslie Davis
Beth Davis
Rick and Shari Deitchman
Andrew and Nikki DeVillers
Richard and Nancy Dietz
Ginny Dodd and Fan Watson
Alyssa Dodd
Ann Dunnam
Mark Eckert
Ron Eubanks
Amy Farrell
Greg and Beth Fidler
Dan and Pam Frese
Jack A. Fulbright
Garden Club of Weddington
Brett and Nancy Gilbert
Jean P. Gilland
Carol Golden
Ruth Ann Grissom and Marcus Plescica
Gary and Pushpa Gross
Adam Guerino
David Guseman
Marc Gustafson
Michael and Claire Gwyn
Paul F. Haddock, III
Donald and Amy Hardin
Karen and Herb Harriss
Samuel H. Hay*

Mary Hovis Heath
Steven Hedberg*
Dana and Nancy Hershey
Van and Katherine Hill
Amy Hockett
Dorothy D. Hodges
Jack and Rita Horan
Doug and Lanier Hoy
Jane and David Hoyle
Karen Humphrey*
Andrew Huneycutt
Edith Irons
Mikell and Elaine Jarratt
Cheryl Johnson
Jean and Carl Johnson*
B.J. and Emily Jones
Camille Kanofsky
Matthew Karahalios
Stephanie and James Kimball
Benjamin and Rosemary Klein
Kevin and Julia Kline
Arthur Kohn and Priscilla Laula
Janice A. Koppenhaver
Becky Kuhn
Laura Laye
Elizabeth and Haynes Lea
Nancy Leach
Eva Lee
Lee and Mark Leggett
Roger M. Lewis
Samuel Long, III
James F. and Donna Love
Lucinda Lucas
Scott Lurie
Richard and Carol Luttrell*
Vi Lyles
Pamela Mahony
Allison Malter*
Thomas W. Mangum
Sterling and Mary Martin
James and Barbara Masson
Blair and Patricia Mauney
Michael and Susan McCoy
William and Civil McGowan
Deanna McRorie
Larry and Audrey Mellichamp*
Lindsay and Mark Merritt
Kemp and Cindy Michael
Edgar M. Miller
Will and Missy Miller
Rebecca Mitchem*
Albert and Sarah Mitchener
Theresa Morr
Fred and Kay Moss
Jeanne M. Neumann
John H. Niles
Mary Lou P. Norcross
Kerry and Timothy O'Connor
David and Kathy Oliver
Pat and Frank O'Neill
Kristen O'Reilly
William and Sandra Palmer
Dennis and Susan Patterson
Betty and Rod Peck
James J. Pittman
Thomas and LeDayne Polaski
Tim Porter
Jack and Karen Rhyne
Michael and Heidi Rotberg
Mr. and Mrs. Dalton Ruffin
Stacie Salisbury
Elizabeth Samples
Robert Sigmon
M.B. Somerall*
Dr. Lynn and Mrs. JoAnn Spees
Tex and Grace Squires
Richard and Nancy Stark*
John Stedman
Jacqueline Stegner
Lisa Stewart
Bonnie Stewart
Joseph and Janice Stowe
Nick and Angela Street
Steve Strother
Frank and Shelley Sturges*
Thor and Dana Svendsen
Maha Swede
Phyllis Tarrant*
Sue B. Taylor
F. Boyce Thies
Terry Thirion
Gail L. Thomas
William and Parker Thomas
Cynthia Thomson and Michael Murphy
Richard and Theo Thomson
Bradley Touma
Dr. and Mrs. Eugene A. Uhlan*
Greg Urban
June M. Vasoll
Martha Walters
Scott and Sherry Webb
Anna B. Weil
Jonathan R. Wells
Michael and Lois West
Debbie White
John Whitlock
Neill Wilkinson



Diane Willis
June and Kenneth Winston
Dr. and Mrs. James H. Woodward
Andrew and Lisa Zerkle*

UP TO \$49

Jeff Abbood
Laura Adams
David Ballenger
J. Donald and Jean-Marie Bass
Michele and Thomas Battle
Emilie R. Booker
Jeana Neal Borman
Mary Bruno
Amy and Dee Bumgardner
Jerry and Peggy Busby
Catherine H. Castro
John and Ann Chalk
Robert Chandler
Vanessa Clarke
Alexandra Colello
Douglas L. Cummins
Richard Farmer
Denise Finck-Rothman
Catherine Friedenreich and Alan Black
Justine George
Nathan and Carman Gillis
Anne Graham
George and Elizabeth Guzynski
Emmie Hancock
John and Christina Hanna
Catherine H. Hart
Nathaniel W. Hatch
Dr. Karen O. Hodges
Kathleen A. Jackson
Walter and Eileen Joyce
Terry Kerr
Patricia Klein
Barbara S Lake

Anthony and Sarah Lathrop
Betty D. Lee
Kathryn Long
Jane C. and Wayne Lowe
Michael Macintyre
Howard C. Martin, Jr.
Graham and Susan Mason
David May
Mary McKenzie
Melissa Millette
Nicole Morris
Nancy E. Nicholson
Pauline Nilend
Dawn P. Patterson
Sarah B. Perry
Melinda Petrimoulx
Patricia Pietersen
Diane and Richard Podolsky
Bruce and MaryRose Randall*
Mary and Nathan Rantala
Thomas and Joanna Roberts
Wendy Roberts
James Scanlon
Gail Sifford
Michael E. Sullivan
Marilyn and Frank Sutterlin
Frances and Bill Thompson
Sharon Thompson
Gary and Pennie Thrower
Michael Thuemmle
Tom Torkildsen
Mollie Trosper
Tim Turton
Dr. and Mrs. Van Vagianos
Catherine L. and Michael Vowell
Kiera Whalen
Bobby G Whisnant
Maragaret Willoughby
Nancy Yudell

CORPORATE, FOUNDATION AND GOVERNMENT

We greatly appreciate the generosity and strong commitment to conservation shown by the foundation and corporations that made gifts during the 2017 calendar year.

\$20,000+

Clean Water Management Trust Fund
US Fish and Wildlife Service
South State Bank
Bragg Financial Advisors, Inc.
Wells Fargo Foundation
Mecklenburg County

\$10,000+

BlackArch Partners
Crescent Communities
Duke Energy Foundation
Harris Teeter
Regions Bank

\$5,000+

Akers Foundation
Appian Group, LLC
Community Foundation of Gaston County
Cogentrix Energy Power Management
Faison
InterCon Building Co., LLC
K&L Gates LLP
Marsh Properties
The Carrie E. and Lena V. Glenn Foundation
Troutman Sanders LLP

\$2,500+

Balfour Beatty Construction
Brasfield & Gorrie
C Design Inc.
CBRE
Cato Corporation
Cardinal Foundation
Clariant Corporation
Collier Law, PLLC.
GreerWalker, LLP
Integra Realty Resources Charlotte
Keffer Autogroup
Little
McKim & Creed Inc.
Moore & Van Allen, PLLC
Myatt Landscaping Concepts, Inc.
PNC Financial Services Group
RES
Robinson Bradshaw
Shelco, LLC
Sides Erosion Control Services, Inc.
Town of Mineral Springs

\$1,000+

Aqua e Vino
Babalu Tapas & Tacos
Blythe Development Company
Bohler Engineering
Bonterra
Catawba County
DPR Construction
Rare Roots Hospitality
ECS Carolinas, LLP

Eleanor and James Barnhardt Foundation
Ernst & Young LLP
First Gaston Foundation, Inc.
Forsite Development Inc.
Grandbridge Real Estate Capital
Great Outdoor Provision Co.
GVA Lat Purser & Associates
Hart & Hickman PC
Harper's Restaurant Group
Horizon Investments
Howard Construction Co. of Lincolnton
Jones Lang LaSalle
Laurel Market
Lumiere
McPhail
Mecklenburg Audubon Society
Page and George Bradham Family Foundation
Piedmont Natural Gas Foundation
Pilkington
Red Bird Advisors
Reid's Fine Foods
S&ME
Sanford Contractors
Southeastern Architectural Systems
The Shaw Tate Group
Trexler Foundation
Trinity Partners, LLC
Wildlands Engineering, Inc.
Yellow Duck Marketing

\$500+

Arthur's Wine Shop
Albemarle Foundation
Barrington's
Blue Blaze Brewery
Earl's Grocery
ESP Associates, PA
FR Custom Catering
Harker
Kent Companies Southeast
Lenny Boy Brewing Co.
Mac's Speed Shop
Napa on Providence
Porcupine Provisions
RuRu's Tacos and Tequila
The Howe Foundation
The Stowe Foundation
The Turnhouse Grille
Z. Smith Reynolds Foundation

\$200+

Chambers Real Estate Investments
Dubya Creative
H.W. Culp Lumber Company
Rinehart Wealth Management
Tabor

\$50+

Charlotte Agenda
H2H Ventures LLC.
Jesse Brown's Outdoors

MEMORIALS

Wayne Bolick in memory of Carl and Mildred Bolick
George Buck in memory of Vernita Coxe
Roger Burt in memory of Glenn Wallace
Cindy Caldwell in memory of Ruth Samuelson
Curtis Carlson in memory of Elmer E. and Clara S. Brown
Bryan Denton in memory of Daniel Bain
G.H. Dornblazer in memory of Robert Solow
Ann Dunnam in memory of Douglas Dunnam
Gastonia Medical Specialty Clinic, P.A. in memory of Thomas Murphy
Anne Henderson in memory of David Henderson
Kim Hombs in memory of Dzidra Hombs
Edith Irons in memory of Ruth Samuelson
Bonnie Krempa in memory of Cory Moore
Alice Mauney in memory of M.L. Mauney

Mecklenburg Audubon Society in memory of David Wright
Rebecca Mitchem in memory of Wade Mitchem
Nicole Morris in memory of Lois Hill
John Paschal in memory of Mary Lou Paschal
Sue Peck in memory of Roy Alexander
Karin Rankin in memory of Charles Rankin
Karin Rankin in memory of Charles Rankin
Mary Setzer in memory of Bob Setzer
Brenda Stevens in memory of Paul Stevens
Bill Thompson in memory of Toby Webb
Diana Travis in memory of Laura Ann Travis
Grossman
Suzanne and Kevin Whalen in memory of David Wright
Nancy Yudell in memory of William Gupton

HONORARIUMS

Betsy Alexander in honor of Jon Reed
Dale Allison in honor of Ben Boswell
Jean Anderson in honor of David Anderson
J. David Barnhardt in honor of Addison Shonts
Robert Blanton in honor of Steve and Suzy Hannon
David Caldwell in honor of Doug Caldwell
Chuck Cheney in honor of Brad Gatehouse
William Craemer in honor of Dana and Robert Servatius
Donald Dickmann in honor of Marc Dickmann
Denise Finck-Rothman in honor of Jill McLaughlin
Carol Gallant in honor of Pete and Gertrude Gallant
Don Gately in honor of Tom Okel
Amy Hockett in honor of Dan Hockett
William Hubbard in honor of Margaret Brantley and David Taylor
Edward Jenkins in honor of Kaye and William McMullen
Janice Koppenhaver in honor of Anne Davidson
Becky Kuhn in honor of Erik Tolsma
Betty Lee in honor of Tommy Lee

Pamela Mahony in honor of Elizabeth Bradford
Deanna McRorie in honor of Barbara Alexander
Arrington Mixon in honor of Kelly Katterhagen
Judie Ratcliffe in honor of David Anderson
Greg Schneider in honor of Charles Carter
Patricia Schober in honor of Ruth Dickey
Allen Shifflet in honor of Mike and Minna Elliott
Allen Shifflet in honor of Milt and Carol Childress
Allen Shifflet in honor of Mike and Catherine Fischer
Allen Shifflet in honor of Leslie and Bill Stevenson
Robert Sigmon in honor of Mary Ann Lawler
Robert Sigmon in honor of Neal Sigmon
Kurt Sposta in honor of John and Constance Lapointe
John Stedman in honor of James Connor
Martha Walters in honor of Scott Bodien
Jonathan Wells in honor of Dave Cable
John Whitlock in honor of James and Cynthia Whitlock
Charlie Williams in honor of Sean Bloom

STEWARDSHIP FUND DONORS

Elizabeth and Dave Cable
City of Charlotte
George and Barbara Clark
Bondilyn V. Coley
Cameron and Rusty Eaker
Chuck and Lindsay Meakin
David Simonini

DONATING LANDOWNERS

Bondilyn V. Coley
George and Barbara Clark
City of Charlotte
Cameron and Rusty Eaker
David Simonini
Chris and Tracy Smawley

KETNER LAND ACQUISITION FUND DONORS

Robert Stein

Donations from individual supporters make up about one-third of the Conservancy's operating budget, making our work possible. Please consider making a difference today by assisting with our conservation efforts. Visit our website for more information on how you can donate.

WWW.CATAWBALANDS.ORG



CAROLINA THREAD TRAIL FINANCIAL REPORT

OPERATING EXPENSE BY PROGRAM

	2016 ACTUAL	2017+ ACTUAL	2018 BUDGET
Personnel Cost	\$572,247	\$578,075	\$575,000
Office/Admin	\$68,523	\$82,206	\$93,250
Outreach & Development	\$94,469	\$117,141	\$150,000
Operations	\$19,661	\$19,127	\$29,750
Total Operating Expense	\$754,900	\$796,549	\$848,000

*Unaudited

FUND BALANCES

ASSETS	FUND BALANCE: 12/31/2017
Cash	\$1,680,319
Outstanding Pledges	\$1,716,316
Endowment Fund	\$3,207,313
Total Assets, Net	\$6,603,948

CTT 2017 DONORS

Your generous support enables us to advance trails throughout a 15-county region in North and South Carolina. This list includes corporate and individual gifts to the Carolina Thread Trail made in the 2017 calendar year.

DONORS

\$10,000+

Bill and Sharon Allen
Amy and Robert Brinkley
Judith T. Carpenter
Kathryn Heath and Tom Webb
Kelly Katterhagen and Larry Nabatoff

\$5,000+

Ruth and Colin Shaw
Keith Smith Family Charitable Fund

\$1,000+

Shuford Abernethy
Ric and Ann Browning
Sally and Michael Daley
Jennifer DeWitt
Anne and Peter Gilchrist
Greg and Sherri Gregory
Dehler Hart
Jim and Lynn Lawton
Julie Lerner Levine
Christine Li
Jud and Deborah Little
Bailey and Mildred Patrick
Sharon and Alex Rankin
Patricia Rodgers
Marshall Rogers

\$500+

Kelvin and Tammy Anderson
Dr. and Mrs. Edward and Angela Bower
William and Robin Buckler
Amy and Tom Okel
Adam Purser

\$250+

Melissa Cornwell
Fred and Janet Jackson
Michael and Leslie Marsicano
Mark Miller
David Reitz

UP TO \$249

Mark and Linda Allen
Bob and Kaye Amos
Anonymous
Luz Maria Aveleyra
Bret Baronak
Scott and Betsy Bodien
Christopher and Amanda Buchanan
James Carlevatti, Jr.
Alesia Dicosola
Lisa K. Eanes
Leonard Fumi and Lucy Quintilliano
Carol Golden
Krista Harvey
Andrew Huneycutt
Kelly Jamison
Cheryl Johnson
Barbara Kalinski
Kings Mountain Gateway Trails, Inc.
Indu and Andrew Ladd
Leah Martin
Jennifer Mattox

Tom and Robin McCoy
J. Wriley McKeown
Larry and Audrey Mellichamp
Kristen Nause
Wanda Rosa
Karen and Thomas Schmitt
Craig and Devona Wyant

GREENWAY GALS

\$250+

Suzanne Adams
Ingrid Amols
Deborah Bradbury-Duniec
Sylvia Brydon
Sallie Close
Olivia Cohen
Virginia Columna
Lori Couick
Donna de Molina
Miriam Dixon
Elizabeth Fender
Anne Flint
Rebecca Giblin
Jane Green
Karen Harris
Lauren Hatcher
Mollie Henninger
Mary Beth Hollett
Christy Howey
Jennifer Jones
Stephanie Kimball
Nelida Lopez
Catherine Luckenbaugh
Jennifer Mattox
Susan McDonough
Susan McKeithen
Lorraine Mulligan
Stephanie Nolan
Susan Porter
Carla Rose
Susan Scherer
Sonia Scholl
Marjorie Serralles-Russell
Winnie Simmons
Margaret Sowden
Anne Stolz
Lana Truong
Cydney Watterson
Anja Zimmerman

TRAILHEADS

\$100+ TRAILBLAZER

Bryan Alsop
Bob and Kaye Amos
Jill and Brent Andersen
Holly Angevine
David W. Arone
Dan Aronson
Stephen Bassett
Philip and Amy Blumenthal
Emily Buehrer
Nathan and Laura Clark
Tod Creech
Leonard and Tanya DeGrace
Bryan Denton
Amy Diamond
Elyn and Mike Dortch
Jim Dumser
Lisa K. Eanes

Cynthia Ferguson
Joe Fisher
Shirley Frank
Janet Frederick
Joe Frey
Frank Gammon
John Ghent
Larry Hamrick
Bjorn and Lisa Hansen
Lara Hawkins
Matthew Hedrick
Margaret Herdegen
Erma Deen Hoyle
Anne and Bill Ireton
Nancy Jacobsen
Virginia Kern and Bradna Bowers
Debbie Kiggans
Mark Kincaid
Kings Mountain Gateway Trails, Inc.
Gerry Kingsley
Eric Kjellberg
Arthur Kohn and Priscilla Laula
Jeffrey and Liza Kravis
June and Ken Lambla
Kenda Laughy
Thomas Lawson
Christine Li
Erin Livingston
Nancy Lopez
Lucinda Lucas
Mara Malakoff
Brian Malec
Lydia Matthews
J. Wriley McKeown
Phillip McMillan
Kevin and Laura Mikeworth
Tyrel Moore
Joseph A. Morris
Andrea Mueller
Mrs. Bianca Muller
Ron and Amy Nason
Kristen Nause
Jennifer Neurohr
Billy and Sharon Nguyen
William Niven
Mervil Paylor
Christopher Petrik
Nancy Pierce
Elaine Powell
Abizar and Lubaina Rangwala
Elizabeth Raspanti
Stacy Raynor
Justin Rollins
Robert Ross
John and Erin Russell
Stacie Salisbury
Doug Satterfield
Bill Schiffli
Neal Sigmon
Richard Snyder
Donna Sofsky
Stephen Spooner
Eric and Ellen Stenstrom
Steve Strother
Whit Strunk
Dr. Becka Tait
Chandra Torrence
Polly Trammell
Daphne Traywick
Mrs. Rebecca Walters
Bill and Stephanie Whitesides

\$50+ TREKKER

Daila Allen
Ethan Altmire
Janett and Mark Anderson
Brooke Ayscue
Christopher Baldwin
Luther Barringer
David and Vickie Basri
Christopher Besler
Emily Blackwell
Dianne K Blanke
Sean and Mandy Bloom
Beckey and Donald Boshell
Jennifer Boswell
Gordon Buckingham
Erin Burris
Roxette Busani
Anthony Casanova
Molly Clune
Christina Collins
William and Susan Cox
Lauren Cranford
Eileen Effinger
Anne Elam
Bonnie Foulds
Johnathan Fournier
Mike Furr
Calvin Gaddy
Janet and Jeff Ganoung
Maria Gelabert
Sarah Genay
Gail Gillies
Andrea Glassberg
Madison Gobbell
Annie Gray
Bill Gray
Steven Gray
Paul Gustafson
Barbara Hastings
Sherry Henderson
Kristy Jackson
Emily Johnson
Karen Ulrich Jones
Camille Kanofsky
Penelope Karagounis
Leslie Keena
Laura Kenkel
David Kern
Melissa Kinbery-Blair
Kevin Kruse
Barbara S. Lake
Nancy Leach
Marlene Leone
Dorothy Lodge
Patricia Major
Robert Manross
Debbie Martin
Blair and Patricia Mauney
Lisa McCarter
Sharon McCarthy
Gary and Karen McDougal
Greg McKenna
Elizabeth McNulty
Maureen Mitchell
Sarah and Albert Mitchener
Janet and Lowell Nelson
Jeanne M. Neumann
Karel Newton
Alison and John Nolting
Jeffrey Pinnow
Steven Powers

Liza Pratt
Connie Puckett
Greg Richardson
Elizabeth Samples
Michael Sandy
Lara Saunders
Heather Schoonover
Jessica and Jason Schroeder
Mark Sergeant
Kiersten Shelton Clay
Colleen Simmons
Scott Smith
Mary and Peter Stauble
Dr. Joseph Steiner
Crystal Sundaramoorthy
Krista Swartz
Benson Taylor
Robin Underwood
Barbara Vargochik
Susan Wade
Bryant and Susan Waldkirch
Diane Watson
Martie Weatherman
Cathy and Mike Weaver
Kelly Webber
Anna B. Weil
Richard Whitt
Dan Wray
Laurie Wright

\$25+ HIKER

Jessica Allen
Brenda Anderson
Howard Baker
John Beale
Elizabeth Birch
Dennis Brown
Amy and Dee Bumgardner
Sharon Campbell
Catherine H. Castro
Roger Coates
Barbara Conrad
Gwen and Charles Cook
Alex Cotton
Adis Delic
Roger Diedrich
Paul and Christine Drain
Clarinda Fox
Sandy Francis
Dr. Catherine Freedberg
Kyle Frost
Stephanie Fuqua
Nancy Furry
Dale Gentle
Paul Gettys
Kathy Goodman
Martha Griffin
Cathy Hart
Brandi Herold
Jacob Higdon
Rachel G Hill
Elinor Hiltz
Jim Hinkle
Andrew Hoxie
Lynda Hunley
Cameron Icard
Brantley Johnston
Denise Johnston
Thomas Keaverny
Scott Killoran
Sue and Russ Knight



CAPITAL CAMPAIGN DONORS

Capital Campaign Donors were the original funders who helped kick off the Carolina Thread Trail 10 years ago.

TRAILHEADS CONT.

Hayley Kozma	Isabel Shankle
Jeff and Victoria Landon	Harold Shapiro
Lou and Tamara Lesesne	Joshua Smith
Jane C and Wayne Lowe	Keith and Heather Sorensen
Joe Mader	Linda Sprague
Richard Malcolm	Geoff Steele
Leila Manship	Robert Stein
Jennifer Marquardt-Leach	Nick and Angela Street
Robert May	Leslee Temple
Bill McCarter	Missy Thomas
David McGinnis	Lauren Thomas
Dick and Grier McMillan	Brenneman Thompson
Will Medlin	Sharon Thompson
Don Miller	Dr. and Mrs. Van Vagianos
Mike Moore	Kelly Walls
John Northey	Mark Watson
Monroe Pannell	Todd Watson
Ellen Parrish	Lynn Weis
Neil Patel	Christy Wilhelm
Jason Philbin	Derek Williams
Mike Riemann	Kelsey Willis
Robert and Liz Rittase	Reese M. Wilson
Joseph Sass	Sharon Wilson
Greg Schneider	Nancy Yudell
Barbara Schreiber	

MEMORIALS

Jill Blumenthal in memory of David Lowrance	Kings Mountain Gateway Trails, Inc. in memory of Carl Spangler
Sandy Bradford in memory of Agnes Bradford	Nancy Yudell in memory of Harry and Barbara Warshbale
Sandy Bradford in memory of Gene Mason	

HONORARIUMS

Charlene Columna in honor of Helen Faris	Kerry Helms in honor of Ann Helms
Charlene Controne in honor of Bernard Ackerman	Indu Ladd in honor of Shawn Harris
Rufus M. Dalton in honor of Philip Blumenthal	Lucinda Lucas in honor of Patricia Ciccone
Kenneth Davis in honor of Ann and Scott Withrow	Judie Ratcliffe in honor of Judith Ratcliffe
Lisa Eanes in honor of Cathy Trotter	Janet Zick in honor of Unitarian Universalist Church SGM
Julia Grefenstette in honor of Bernard Ackerman	

CORPORATE, FOUNDATION & GOVERNMENT

\$100,000+ Charlotte Mecklenburg Community Foundation	McAdams McAdenville Women's Club Pharr Yarns REI Sun's Up Scuba
\$50,000+ Dickson Foundation James Turner Jr. Family Endowment Fund	\$500+ Belmont Realty Blue Blaze Brewery Citizen's Bank Huron Consulting Group INC LandDesign Lenny Boy Brewing Co. McLean Homes PermaTrak Stewart Whole Foods Market Wildlands Engineering, Inc.
\$25,000+ Community Foundation of Gaston County Founders Federal Credit Union	\$250+ Alpine Towers Alta Planning + Design Benesch Bungalow Picnic Company Contech Engineered Solutions Landeavor Renu Energy Solutions Simply Yoga and Wellness WithersRavenel
\$5,000+ Akers Foundation Pacific Life Foundation	
\$2,500+ Arborguard Tree Specialists Morehead Group	
\$1,000+ Arete Structures Blum, Inc. Gastonia Jeep Great Outdoor Provision Co. Jesse Brown's Outdoors	

\$1,000,000+

The Bank of America Foundation
C.D. Spangler Foundation
The Duke Energy Foundation
Foundation For The Carolinas
John S. & James L. Knight Foundation
Turner Family Foundation
The Wachovia Wells Fargo Foundation

\$100,000-\$999,999

Advantage Carolina Foundation
Bill and Sharon Allen
Anonymous
Mr. and Mrs. Philip Blumenthal
Blumenthal Foundation
Amy and Robert Brinkley
Carolinas HealthCare System
The Charlotte Mecklenburg Community Foundation
Dickson Foundation, Inc.
Founders Federal Credit Union
Lowe's Charitable and Educational Foundation
Piedmont Natural Gas Foundation
Mr. and Mrs. Jerry Richardson
Ruth and Colin Shaw
W. Duke Kimbrell Family Foundation

\$50,000-99,999

Crandall and Erskine Bowles
Mr. and Mrs. Harry and Rebecca Dalton
REI
Southwood Corporation
William and Nancy Stanback
James Whitton
Women's Impact Fund

\$10,000-49,999

Bernard N. Ackerman
Akers Foundation
Blum, Inc.
Peggy and Bob Culbertson
David Belk Cannon Foundation
Herbert Doss
Anonymous
Lynne and John Ford
Kathie and Bill Grigg
Julie and Howard Levine
Mike Mabry
Monsanto Fund
Ben Rudisill
Tonya and Stoney Sellars
Pam and Andy Warlick
York County Council
Elizabeth B. Yost Trust
Z. Smith Reynolds Foundation

\$1,000-\$9,999

Anne Springs Close Greenway
Anson Bank and Trust Co.
Arborguard Tree Specialists
Bank of Stanly
Benchmark Trails Inc.
BlackArch Partners
Jane W. Bolick
Cabarrus Bank and Trust Company
Carolinas Medical Center
Charity Games
Derek and Sallie Close
CMH Space Flooring Products, Inc.
Rufus M. Dalton
Glenn DeGeorge
Susan DeVore
Roger and Sally Dick
Domtar Corporation
Michelle and Kelly Frenzel
Karl and Sandy Froelich
Ann Gaither
Anne and Peter Gilchrist
Greg and Sherri Gregory
Dale F. Halton and Fred Wagner
James Boyce Garland Memorial Fund
Jesse Brown's Outdoors
Johnston, Allison and Hord
Ed and Page Kizer
Legacy Shares, LLC
Mr. and Mrs. Joseph Lipe
Little
Lowe's of Belmont and Gastonia
Sallie and Fred Lowrance
Luquire George Andrews, LLC
Mervil Paylor Design
Mountain Khakis
Natural Resource Group
N.C. Department of Transportation

Sally and Lane Ormand
Richard J. Osborne
The Outdoor Foundation
Bailey and Mildred Patrick
Positec Group
Sharon and Alex Rankin
SCBT
Kellie and Jeff Scott
Susanne and Jerry Sellers
Mr. and Mrs. Carl M. Spangler, Jr.
The Tin Kitchen
Joye Thomas
Thorlo
Turner Construction Company
US National Whitewater Center
Uwharrie Capital Corp.
Wells Fargo Insurance Services, USA
Tammy Whaley
Whole Foods Market Charlotte
Gregory Wolf

UP TO \$999

All About the Pipes Plumbing, Inc.
Bob and Kaye Amos
Amanda Anderson
Attitude Nation
B and B Distributors, Inc.
Rebecca Bahn
Dianne and Brian Bailey
Mr. and Mrs. Lonnie Baucom
Baxter Town Center
Rob Bierregaard and Cathy Dolan
Birdsong Brewing Co.
Sean and Mandy Bloom
Blue Ridge Trail Works, Inc.
Jill Blumenthal
Carl A. Boggs
Lynda Boozer
Dr. and Mrs. Edward and Angela Bower
John and Kristin Hills Bradberry
Mr. J.D. Bricken
Brixx Wood Fired Pizza
Kelly Brooks
Geoff Brown
Ann and Ric Browning
Gretchen Caldwell
Jeannette K. Campbell
Carmel Country Gardeners
Carolina Title Company, LLC
Carolina Wetland Services
Eric Caruthers
Catawba Valley Outing Club
Centered Wellness Carolinas, LLC
Chiquita Classic
Rich Coleman
Barbara Conrad
Elizabeth Cook
Shane Cooper
Bruce and Debbie Darden
Davidson Garden Club
Alvaro and Donna de Molina
Jennifer Dillon
The Dodd Studio
Elyn and Mike Dortch
Down Home Baking Company
Earth Fare
East Lincoln Good Fellows
Sam Erwin
Anne Essaye
Jonathan Evans
Leila Evans
Nancy and Ralph Falls
Elizabeth Fender
Renee Fiott-Mitchell
Four Friends Brewing LLC
Maria Frey
Charles and Frances Furr
Rebecca Giblin
Ruth Ellen and Kenneth Gill
Girl Scouts, Hornets' Nest Council
Melissa Girt
Kristy Goelzer
Bari Gorelick
Jane Green
Green Gardeners Club
C. Greenwald
Nancy Grimm
Lorin Hamilton
Katherine L. Hardwick
Suzanne M. Harnois
Janie Hatchell
Peter R. Herran
Hikers of Iredell Club
Sylvia and Raymond Holmes
Cornelia and Roderick P. Hoover
Hornwood
Ken and Marilee Huntley
Lori A. Jennings

Nancy F. Johnson
Penelope Karagounis
Susan Kearney
Laura Kenkel
Virginia Kern and Bradna Bowers
Stephanie and James Kimball
Mark Kincaid
John and April Kinley
Elaine Kirby
Ryan and Shannon Klar
Mabel Koo
Louise Laganiere
LandDesign
Kathy Langley
Leaf and Petal Garden Club
Mr. and Mrs. Stephen P. Leary
Kate Lee
Stacy Leff
Shawn Lemond
Lenny Boy Brewing Co.
Daniel Love
Allison Ludwig
Brian Malec
Mrs. Johanna D. Maness
Robert Manross
Henry Martinat
Kathy McAllister
Roline H. McGinnis
Phillip McMillan
Lindsay and Chuck Meakin
Diane Meirowitz
Merri Mint Garden Club
Suzanne M. Merritt
Debbie Mijatovic
Mimi Nichols
Palmetto Conservation Foundation
Jagruiti Patel
Pamela and Franklin Pendleton
PermaTrak
Anne and Scott Perper
Piedmont Patriots Chapter NSDAR
Rhonda Poppen
Selina Pradhan
Premier
Betsy Prichard
Katherine Rabun
Judie R. Ratcliffe
Jane S. Ratteree
Mr. and Mrs. William G. Reynolds
Jo Ann Rodgers
Joanne Empey Rodriguez
Carla Rose
Jessica Rossi
Rotary Club of Cabarrus County
Michael and Heidi Rotberg
Chris and Robin Sanford
Terry Satterwhite
Marjorie Serralles-Russell
Paul Shealy
Marcia Simon
Site Solutions
Laura and Grady Smith
Gregory Sobieski
South Carolina Horseman's Council
Southward Solar Designs, Inc.
C. Marie Spearman
Statesville Women's Club
Kim and Dale Stewart
Stewart
William Stokes
Ta'Liah Massage
Tarheel Trailblazers
Jerry Taylor
Annette Telljohann
Mrs. Emily M. Thomas
Ellen Thomas
Town of Earl
TrySports
Susan Tuttle
Kristine Vaden
Walmart Distribution Center 6070
Amanda Walrath
Linda K. Warner
J.B. Watson, Jr.
Bob Webb
Wells Fargo
Solange Werner
Dorothea West
Leslie Westmoreland
Wickcraft Company
Withers & Ravenel Inc.



- CATAWBA -
LANDS CONSERVANCY
LAND | WATER | FARMS | NATURE



CAROLINA
THREAD TRAIL

4530 Park Road, Suite 420
Charlotte, N.C. 28209

704.342.3330
catawbalands.org
carolinathreadtrail.org

NON-PROFIT
U.S. Postage
PAID
Charlotte, NC
Permit No.
1967C

Change Service
Requested

North Carolina
LAND TRUSTS
Saving the Places You Love



Catawba Lands Conservancy is part of a network of land trusts that collectively have protected more than 400,000 acres of the places you love in North Carolina.

OUTDOOR ADVENTURES

Join us on one of our upcoming FREE events! Visit carolinathreadtrail.org/events-calendar for more information and registration. Pre-registration is required for all programs.

THURSDAY, APRIL 5: FITNESS WALK AT RIVERWALK PIEDMONT MEDICAL CENTER TRAIL
6-7 p.m. • Rock Hill, SC
3 miles. Easy, paved trail.

SATURDAY, APRIL 7: FAMILY TREE PLANTING
9 a.m.-12 p.m. • Denver, NC
Tools, work gloves lunch, snacks and drinks provided. Closed-toed shoes required. Children welcome.

THURSDAY, APRIL 19: SUNSET BIKE RIDE AT FORNEY CREEK TRAIL
6-7:30 p.m. • Denver, NC
7 miles. Intermediate mountain bike trail ride.

FRIDAY, APRIL 27: STAR PARTY AT PHARR FAMILY PRESERVE
7-10 p.m. • Concord, NC

FRIDAY, MAY 4: BIG-LEAF MAGNOLIA NATURE HIKE
1-4 p.m. • Gastonia, NC
4+ miles. Moderate to strenuous hike.

THURSDAY, MAY 17: SUNSET BIKE RIDE AT KINGS MOUNTAIN GATEWAY TRAIL
6:30-8:30 p.m. • Kings Mountain, NC
10 miles. Easy to moderate, crushed gravel trail ride.

THURSDAY, MAY 24: BEGINNER TRAIL RUN AT TWELVE MILE CREEK
6-7 p.m. • Waxhaw, NC
2.5 miles. Moderate difficulty.

UPCOMING MEMBER PROGRAMS

Member programs are open to members of CLC and CTT. Visit carolinathreadtrail.org/member-programs for details and registration. Pre-registration is required for all programs.

SATURDAY, MAY 19: MEMBER BIKE RIDE – QUEEN CITY BIKE TOUR.
8-11 a.m. Charlotte, NC.
20 miles. Advanced, on-road group ride. Breakfast provided.

SATURDAY, MAY 19: MEMBER PADDLE – SOUTH FORK RIVER BLUEWAY.
8:30 a.m.-12 p.m. McAdenville, NC
5.5 miles. Moderate difficulty. All gear provided.

FRIDAY, MAY 25 & FRIDAY, JUNE 8: GREENWAY GALS – SPIDER LILY PADDLE AT LANDSFORD CANAL STATE PARK. 9 a.m -12 p.m. Catawba, SC
5 miles. Moderate difficulty. All gear provided.

THURSDAY, JULY 14: MEMBER HIKE: MUSHROOM FORAY AT LAUREL HILL PRESERVE. 9 a.m.-12 p.m. Gastonia, NC
3+ miles. Moderate hike.

Happy Trails

JOIN US AT
NATIONAL TRAILS DAY

SATURDAY, JUNE 2

10AM - 2PM

GOAT ISLAND
CRAMERTON, NC

GUIDED NATURE WALKS

LIVE MUSIC

FREE BIKE RENTALS

FREE KAYAK RENTALS

FOOD & BEER TRUCK

WANT TO LEARN MORE ABOUT MEMBERSHIP?

Visit catawbalands.org

Not sure of your membership level?
Call Elizabeth Miller at 704-342-3330 x 210