



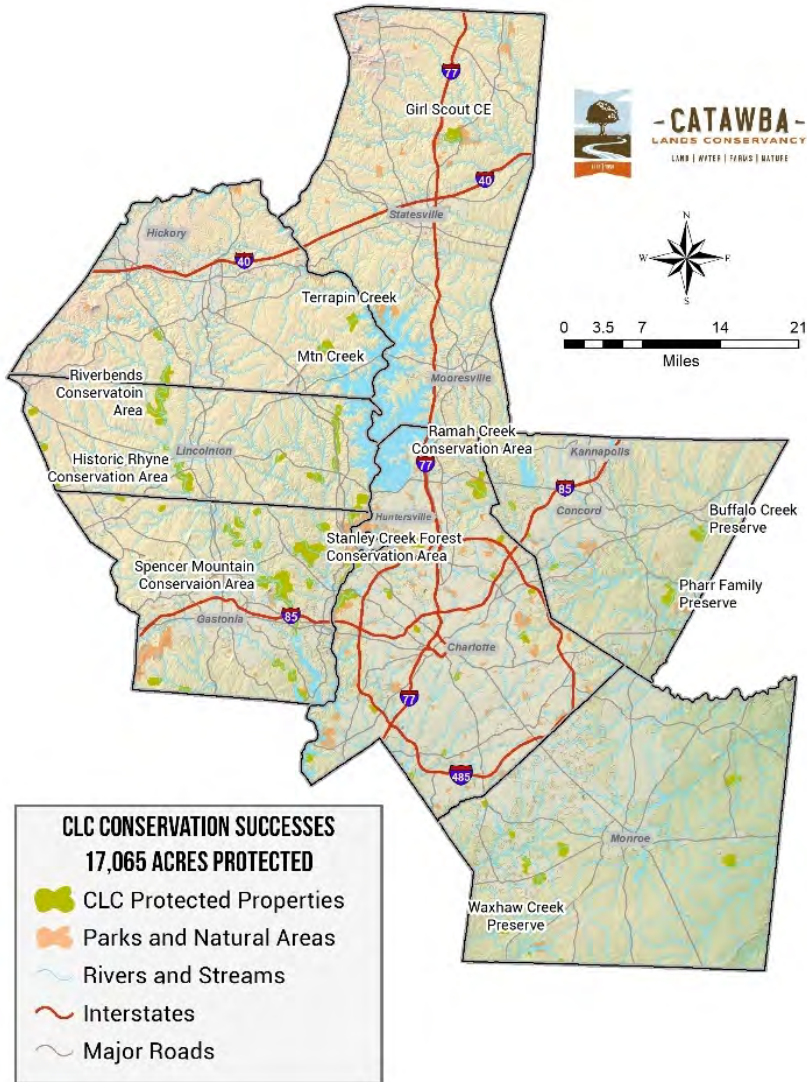
- CATAWBA -
LANDS CONSERVANCY

ESTD | 1991



**CAROLINA
THREAD
TRAIL®**

SAVE LAND IN PERPETUITY



**17,000+ acres conserved
across 7 counties**

4 Focus Areas:

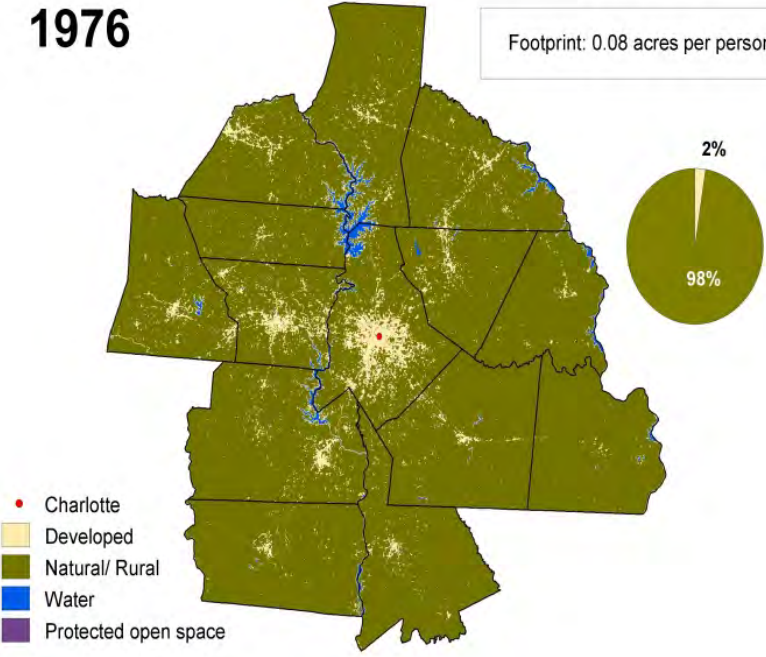
- Clean Water
- Wildlife Habitat
- Local Farms
- Connections to Nature

URBANIZATION: OUR DISAPPEARING GREEN SPACE



1976

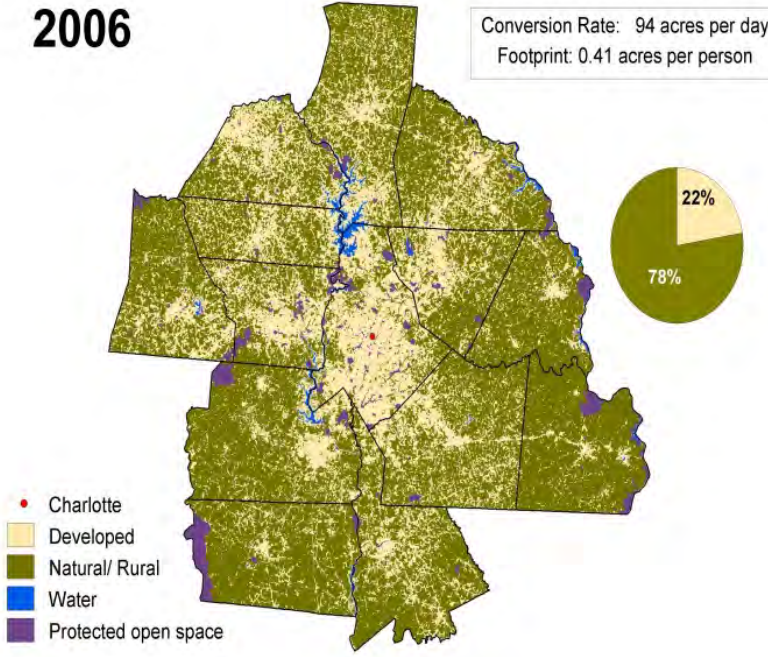
Footprint: 0.08 acres per person



89,600 acres

2006

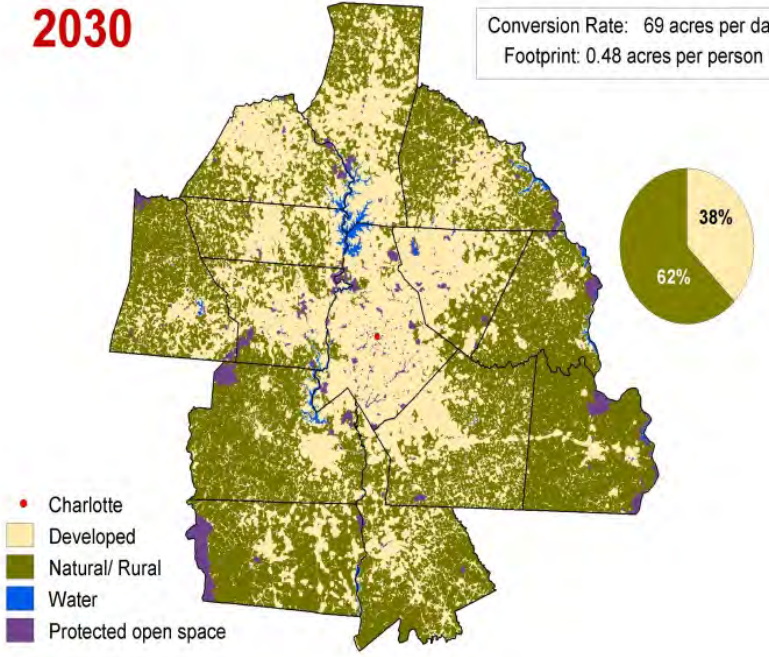
Conversion Rate: 94 acres per day
Footprint: 0.41 acres per person



985,600 acres

2030

Conversion Rate: 69 acres per day
Footprint: 0.48 acres per person

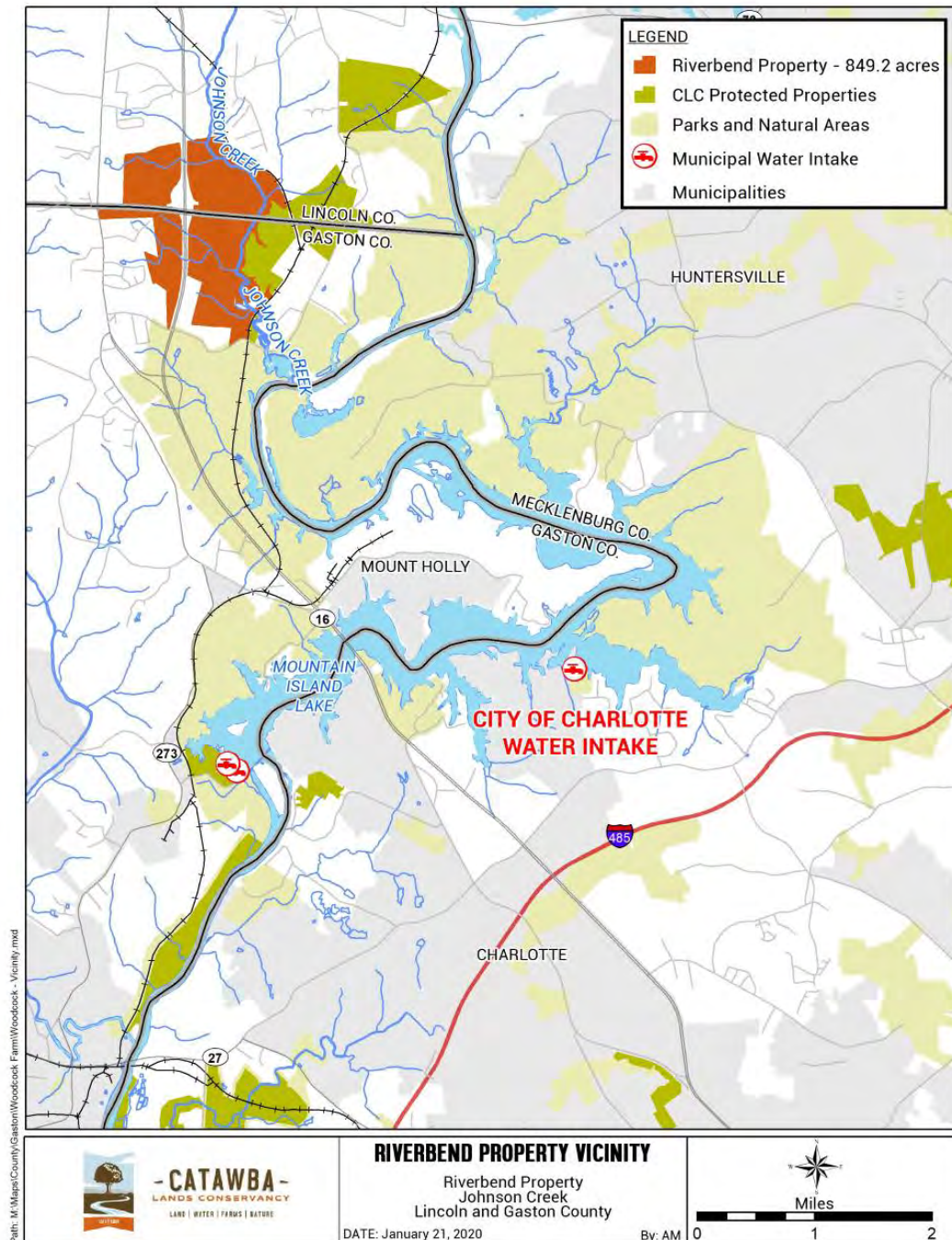


1,702,400 acres



EXAMPLE - RIVERBEND

- ▶ Protect from development on Johnson Creek
 - ▶ Threat to Mountain Island Lake
- ▶ Critical drinking water supply
 - ▶ Mecklenburg and Gaston Counties
- ▶ Working with developer and:
 - ▶ City of Charlotte
 - ▶ Charlotte Water
 - ▶ Char-Meck Storm Water
 - ▶ Gaston County
 - ▶ Mt Holly

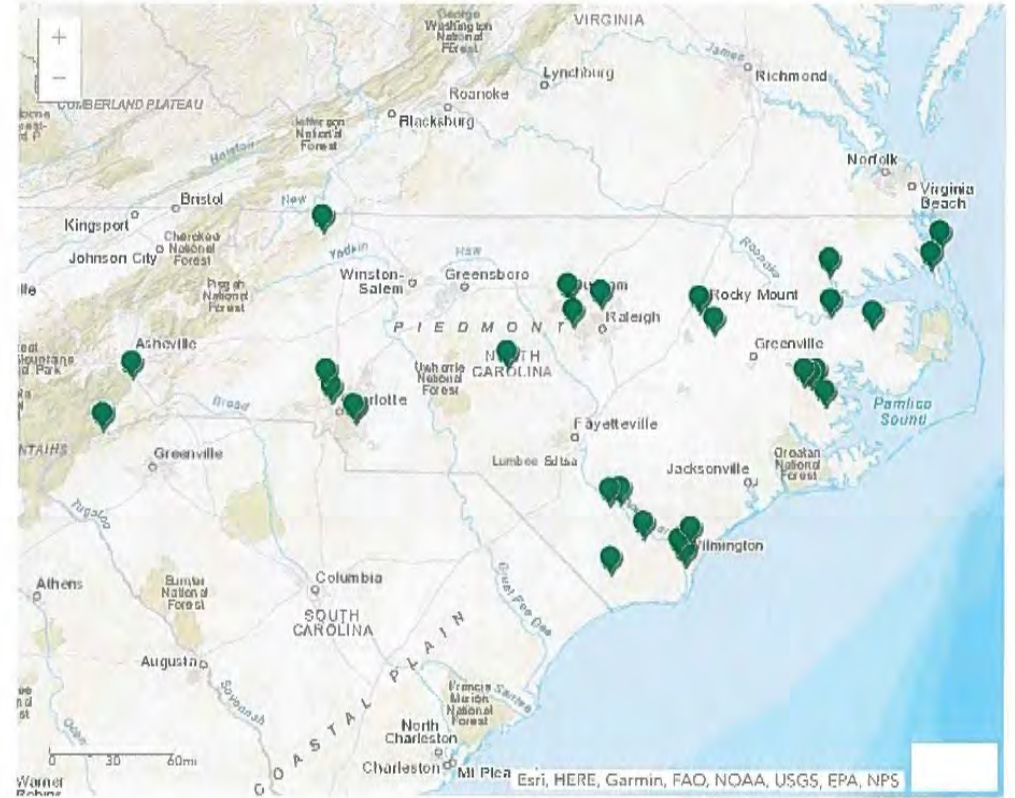


CLEAN WATER

Saving land protects water quality, quantity



Silt, particulates, contamination



Spills and fish kills

RUSTY ROZZELLE

Water Quality Program
Manager, Mecklenburg County

Member of the Catawba-
Wateree Water Management
Group



Catawba - Wateree System

1200 feet above mean sea level

Lake Rhodhiss

● *Statesville*

Lake Hickory

Lookout Shoals

Lake James

Morganton

Hickory

Marion

Lake Norman



Catawba Falls
2,350 feet
above mean sea
level



Lincoln County

Gaston County

*Mecklenburg
County*

Mountain Island Lake

N.C.

S.C.

Lake Wylie



Fishing Creek Reservoir

Great Falls Reservoir

Rocky Creek Lake

Lake Wateree

147.5 feet above mean sea level

- River Channel = 225 miles
- Streams and Rivers = 3,285 miles
- Surface Area of Lakes = 79,895 acres (at full pond)
- Basin Area = 4,750 square miles
- Population = ± 2,000,000

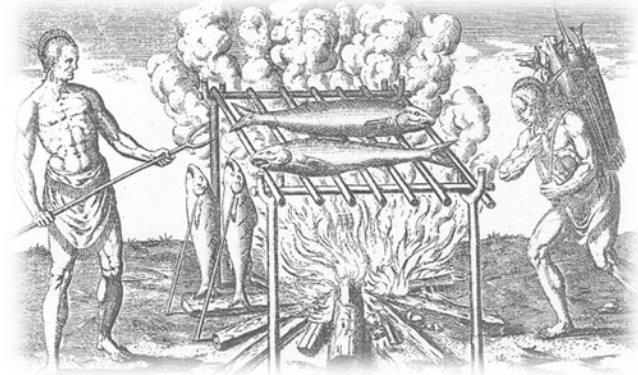
History of the Catawba River



The Catawba River was formed in the same time frame as the Appalachian Mountains about 220 millions years ago during the early Mesozoic – Late Triassic period

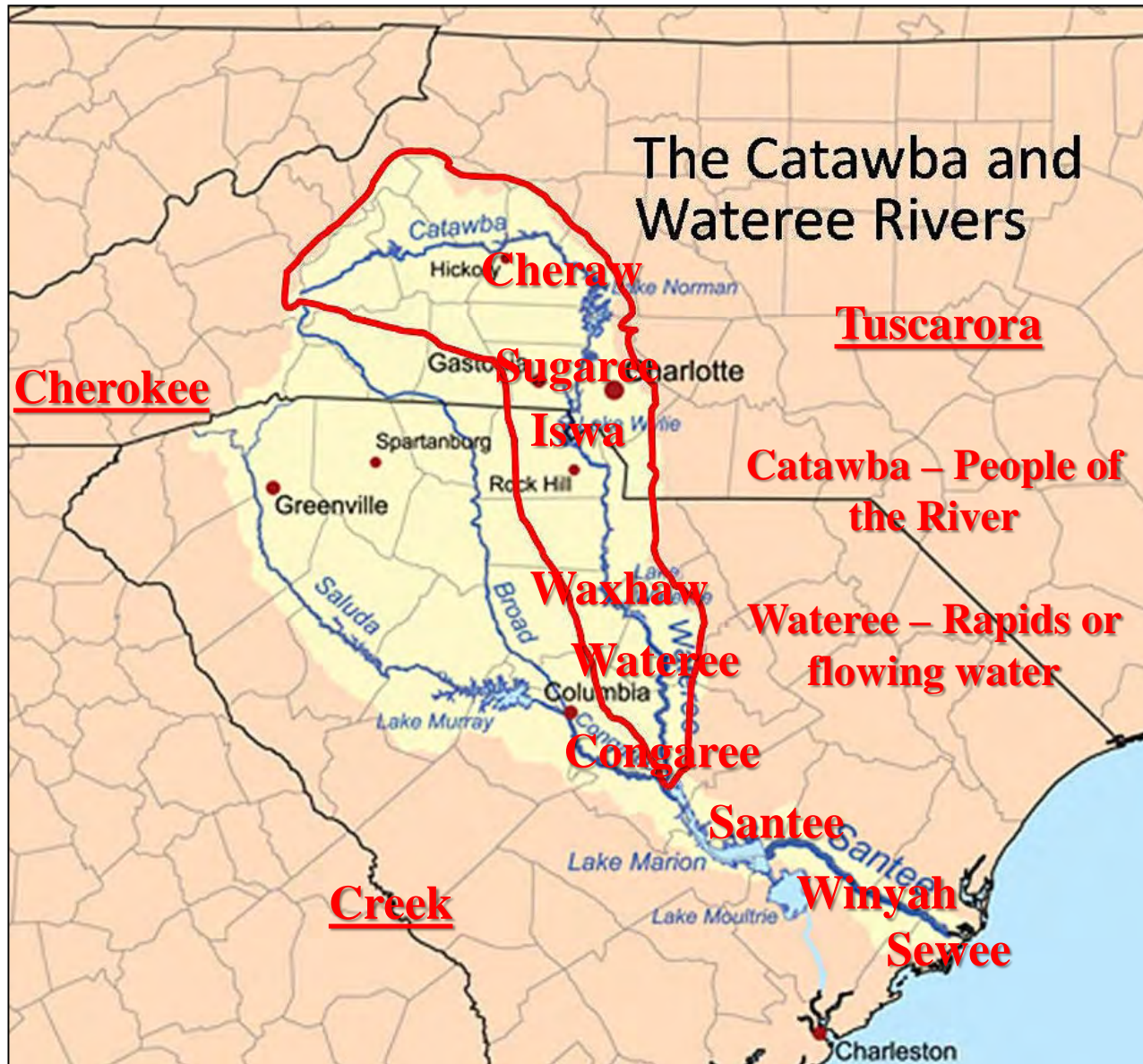
Historical Inhabitants of the Catawba

- 12,000 years ago – Paleo Indians inhabited the Americas migrating from northern Asia.
- 6,000 years ago – Paleo Indians migrated south settling along the banks of the Catawba River obtaining much of their sustenance from the river.
- 1540 – The Spanish explorer Hernando de Soto marched his troops through the Piedmont while heading west looking for gold making first contact with Native Americans in the Catawba Valley.



Native American Tribes Along the Catawba River

Both the Catawba and Wateree Rivers were named for the Native Americans that first settled along their banks.



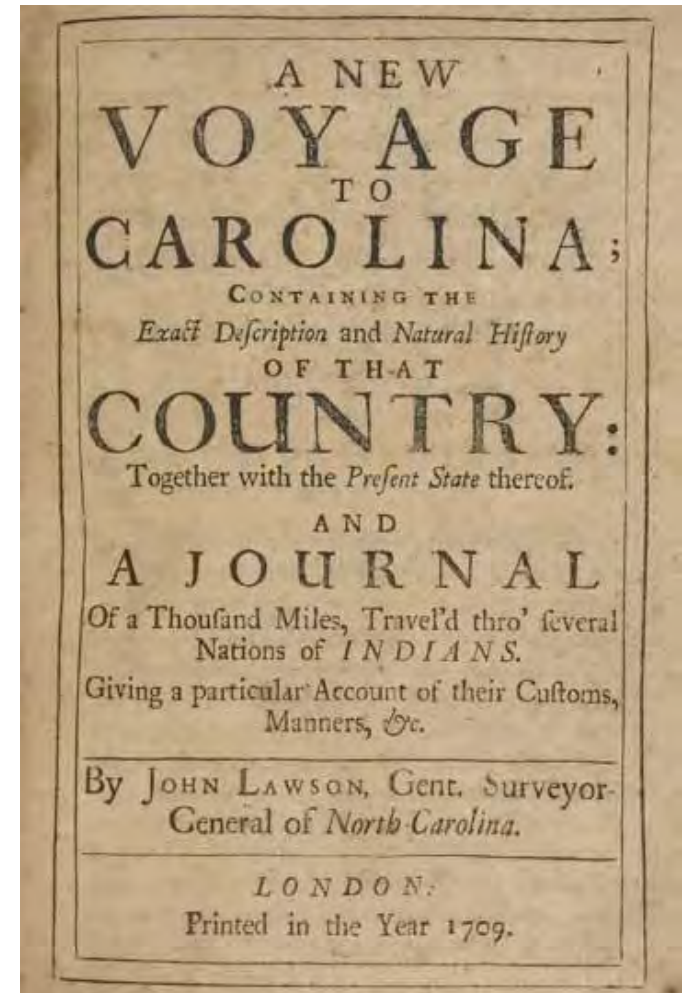
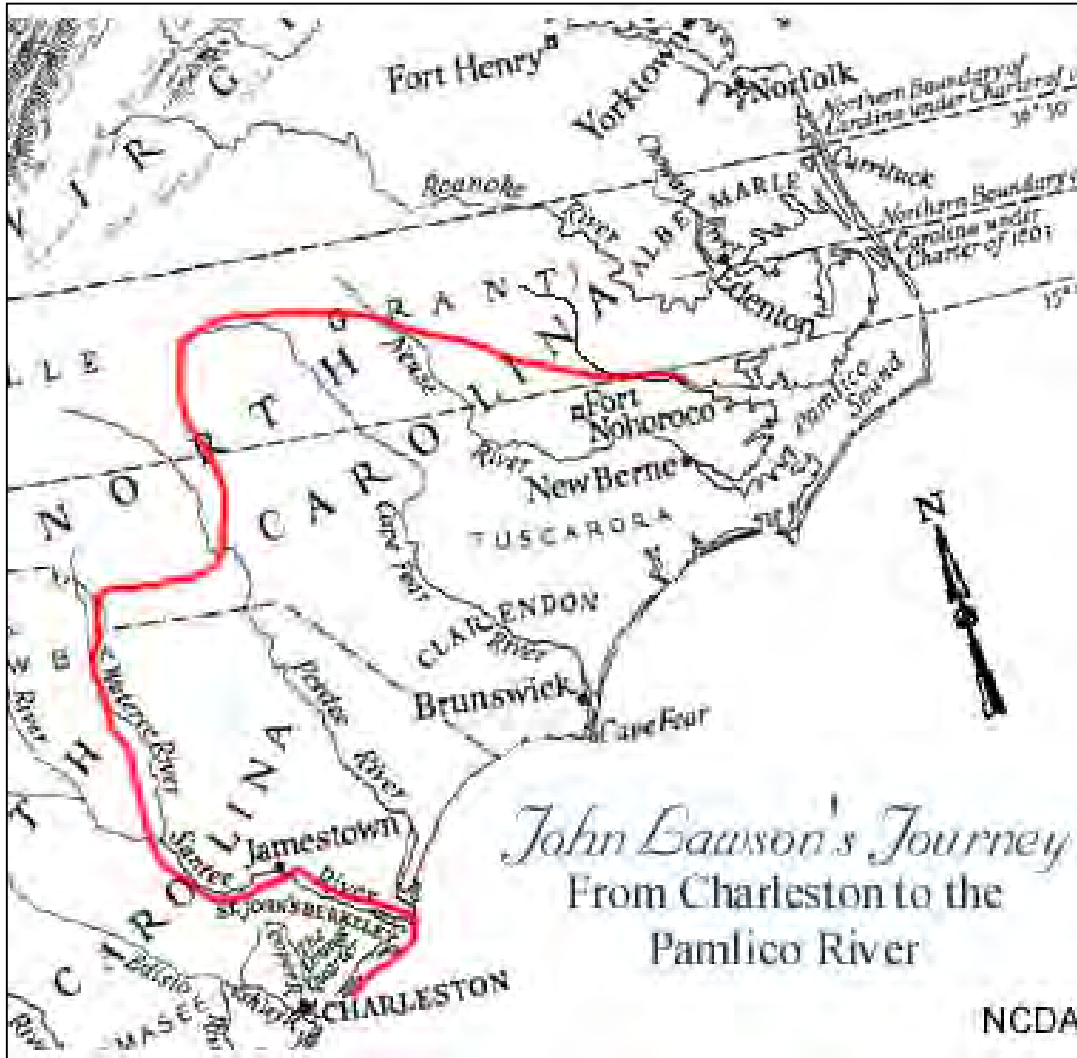
Historical Inhabitants of the Catawba

- 1660 – King Charles II of England established the Carolinas under the rule of 8 Lord Proprietors.
- 1700s – Numerous colonial settlements existed in the Catawba River Valley. Most of the inhabitants were of Scots-Irish and German descent. By 1760, disease spread by these colonists reduced the Native American population to less than 1,000
- 2020 – Population of the Catawba Valley estimated at over 2,000,000, including 3,300 Catawba Indians.

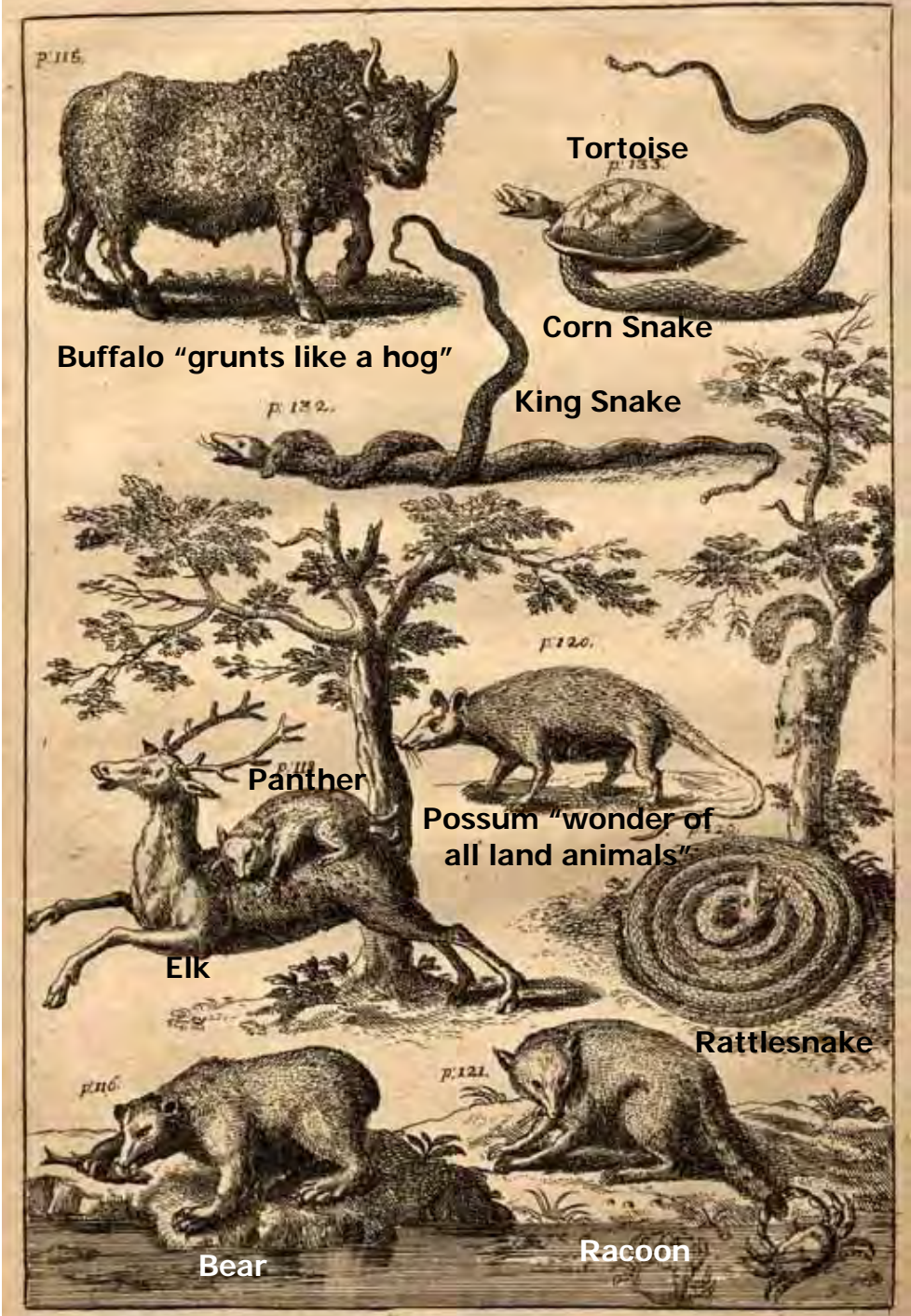


John Lawson (December 28, 1700 to February 24, 1701)

Traveled 550 miles from Charleston, S.C. to Washington, N.C.



Cover of John Lawson's Book – 1709



Animals Documented by John Lawson in his Journal

The Water Mill

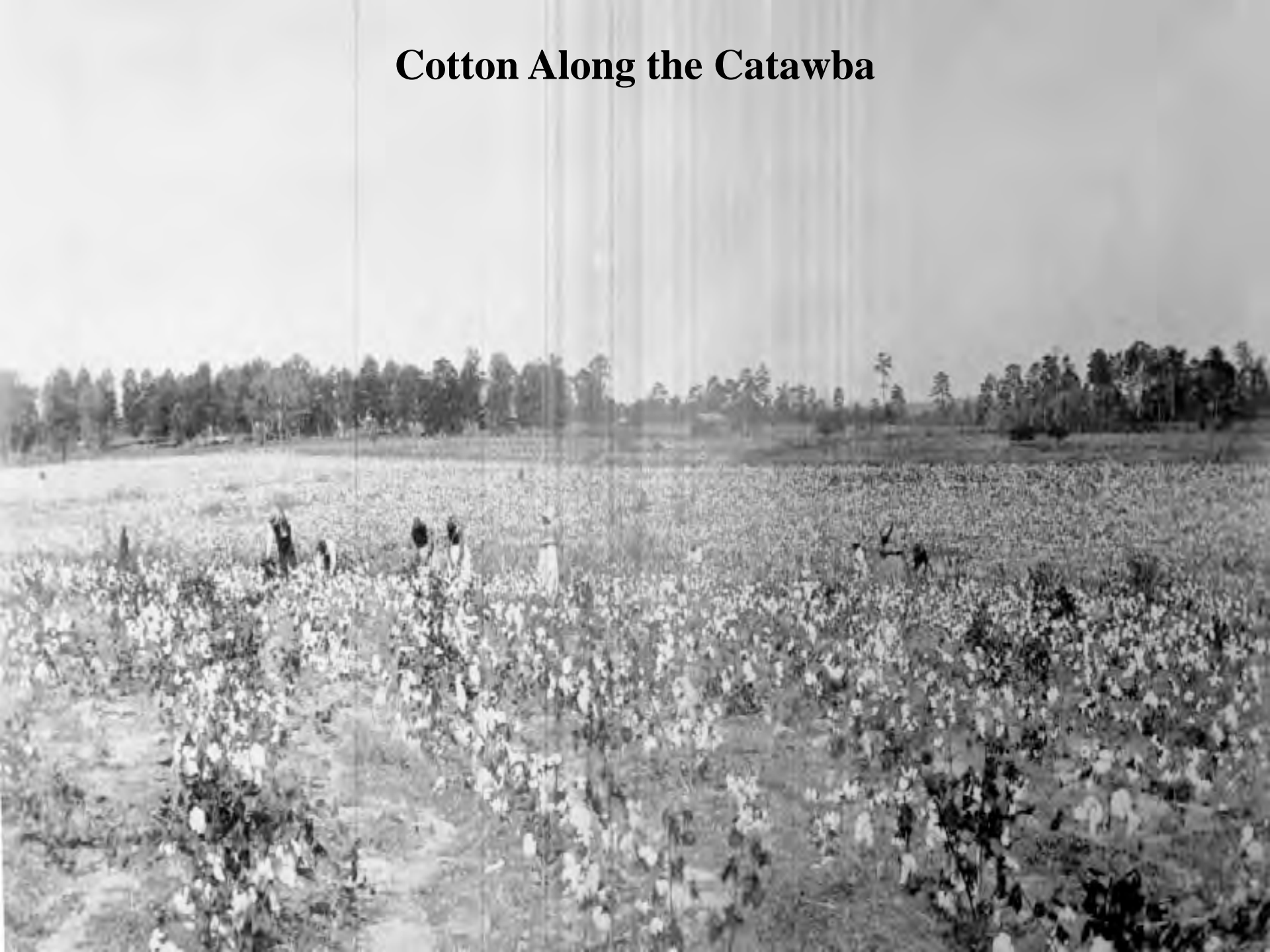


Whitley Mill on Long Creek In Charlotte - 1820 to 1919



Fish trapping was one of the earliest commercial enterprises on the Catawba.

Cotton Along the Catawba



Catawba River & Transportation



Flatboats along the Catawba



**Landsford Canal in Chester County,
S.C.**

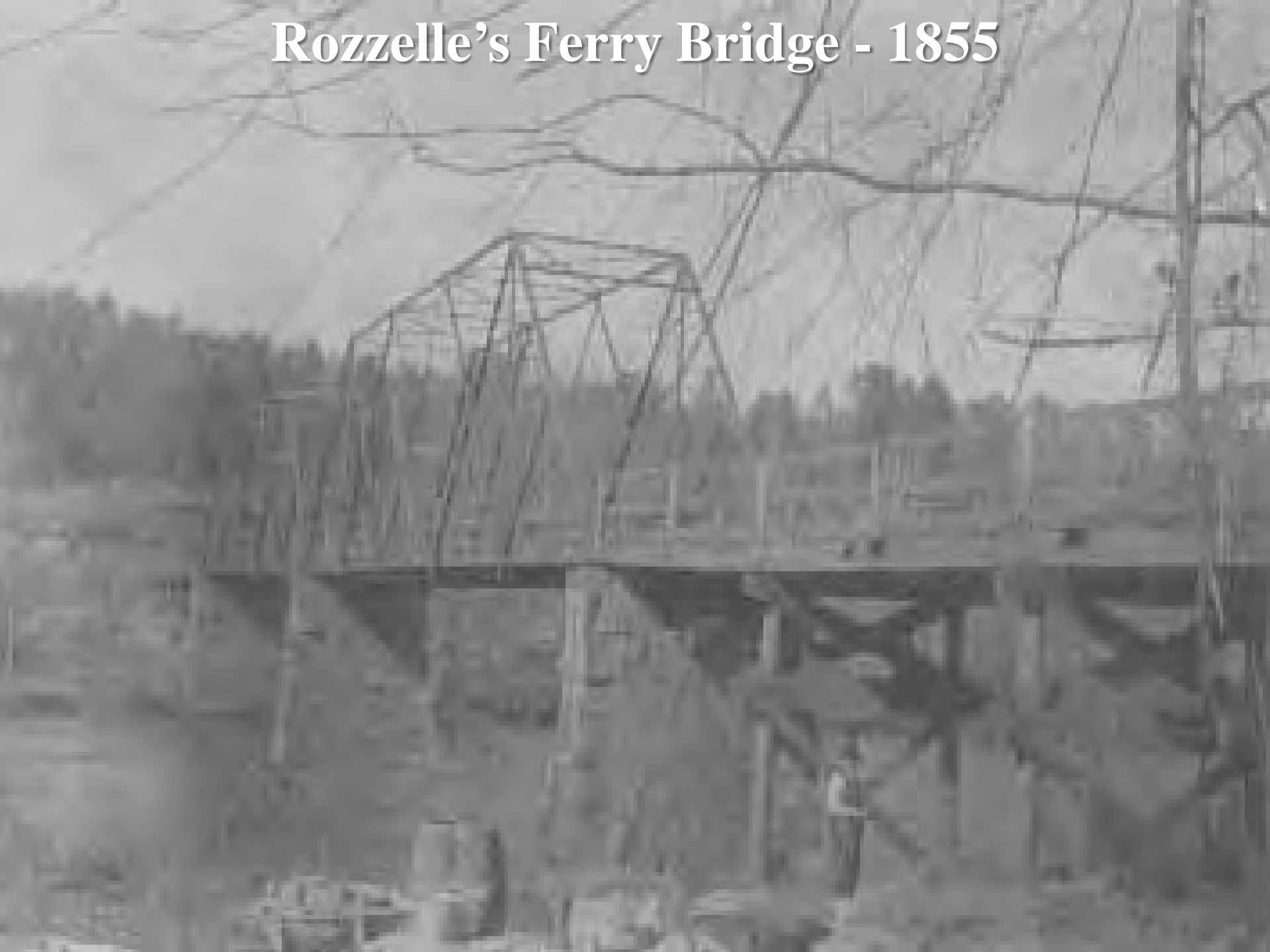
Rozzelle's Ferry on the Catawba River



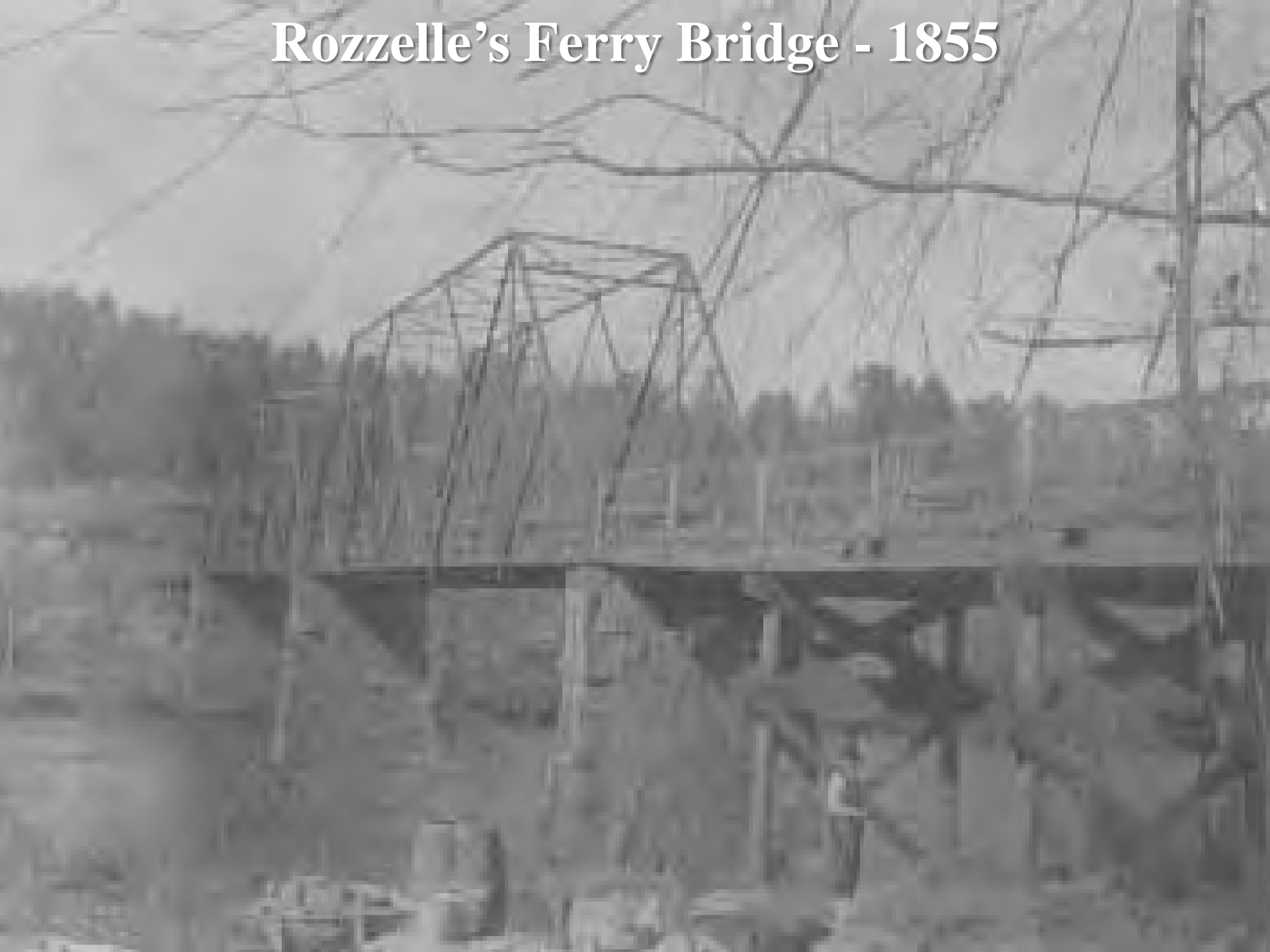
Every Animal on Foot..... 73 C

For Exhibitions

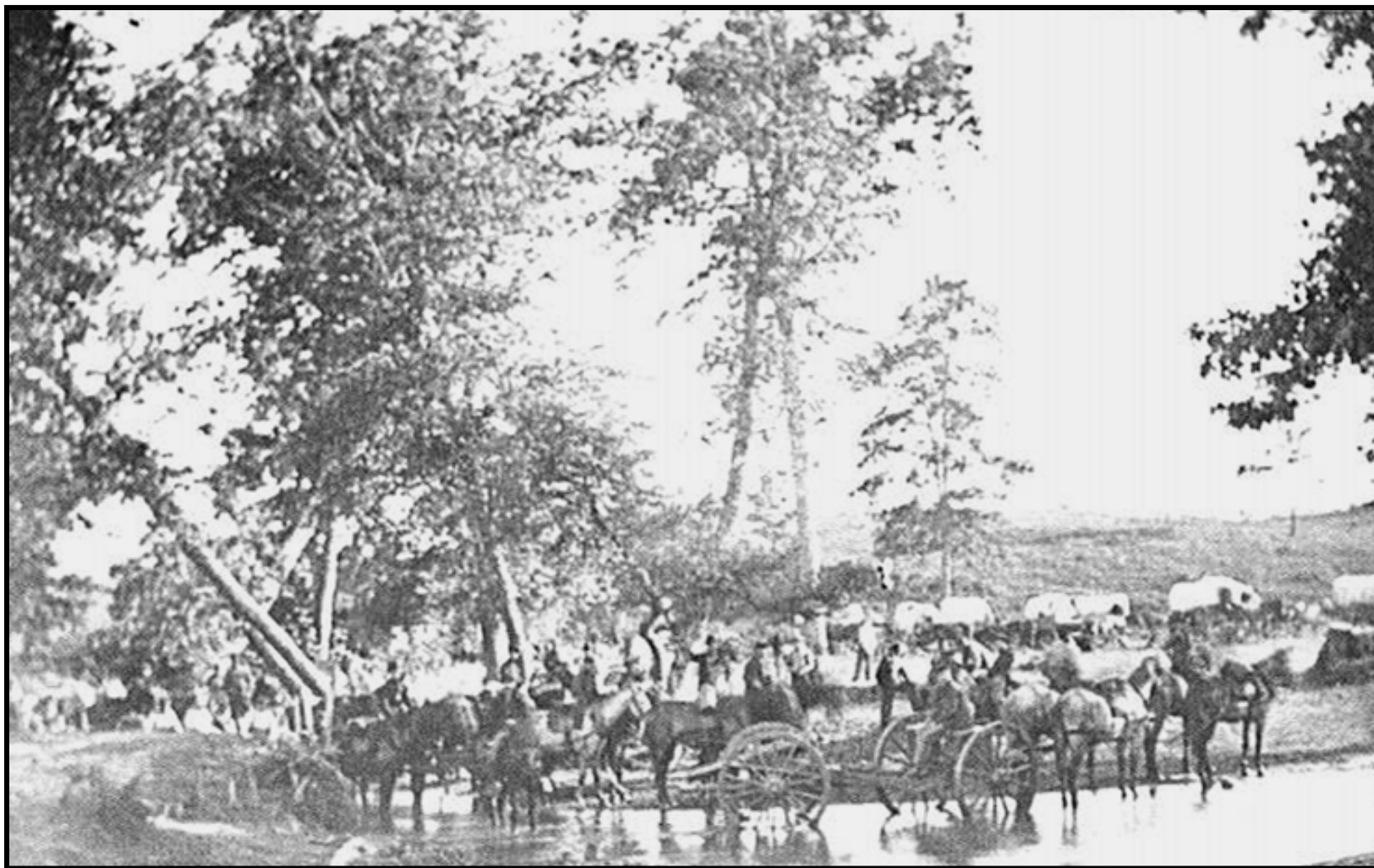
Rozzelle's Ferry Bridge - 1855



Rozzelle's Ferry Bridge - 1855



Battle at Rozzelle's Ferry



April 18, 1865

Rozzelle's Ferry Bridge - 1910





Great Catawba River Flood of 1916

Ella Rozzelle Hart 1890 – 1986 (recorded in July 1984):

Terrible time. I'll never forget.

We saw rocking chairs and things going down. Terrible looking.

I went home and went to bed.

Your daddy (Rusty's great grandfather), Ella, Aunt Laura saw the bridge go down.

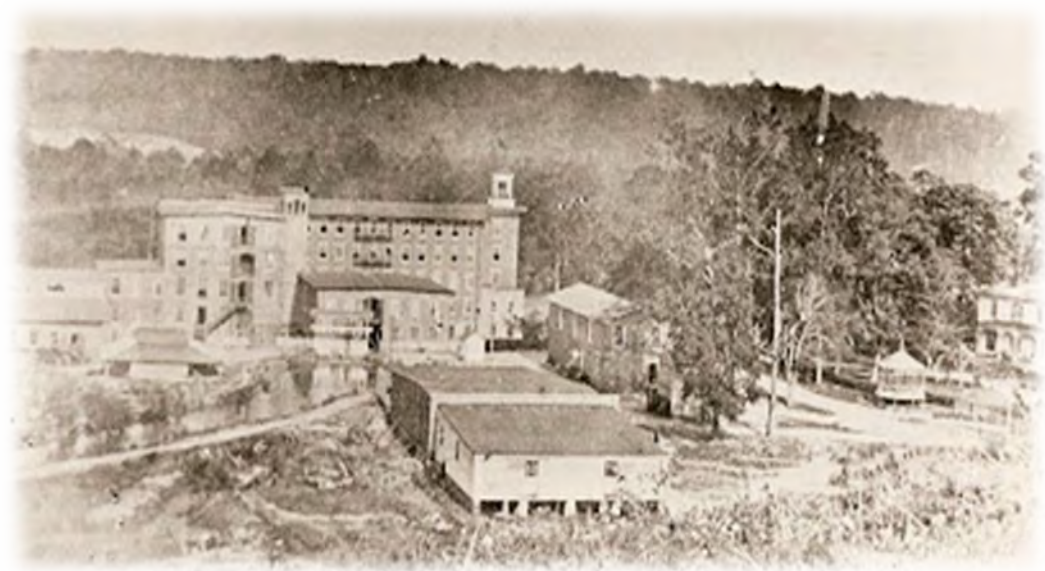
I was in the bed close by the window and your daddy came by and said "Ella the bridge is gone."

It was like somebody had died. Sad Times.

Saw a house go down (the river) with a woman sitting on the porch crocheting.

The Cotton Mill

After the Civil War, the Catawba River Valley grew tremendously as it developed its textile manufacturing industry.



Mountain Island Mill, first mill in Gaston County, 1916

Most mill workers lived in homes provided by the company in close proximity to the mill in what came to be called the Mill Village.



Loray Mill & Mill Village, Gaston County, 1919

Where did it all begin?



Niagara Falls Hydro Station - 1895



642 million gallons of water a day is withdrawn from the Catawba River for drinking, industrial, power generation and agriculture. This is enough water to fill Panther Stadium 2.5 times.

Our surface water resources have shaped our past, sustain us in the present and will dictate our future. The communities we have developed can be sustained only if we learn to appreciate the value of our water resources and commit ourselves wholeheartedly to their protection.

Lake James at the headwaters of the Catawba

An aerial photograph of the Lake Wylie Dam in South Carolina. The dam is a large concrete structure with a spillway, situated on a river. The surrounding area is a mix of dense green forest and cleared land with power lines and structures. In the background, there are rolling hills and a small town. The sky is blue with some clouds. The word "Questions?" is written in a large, white, serif font across the center of the image.

Questions?

Lake Wylie Dam, South Carolina